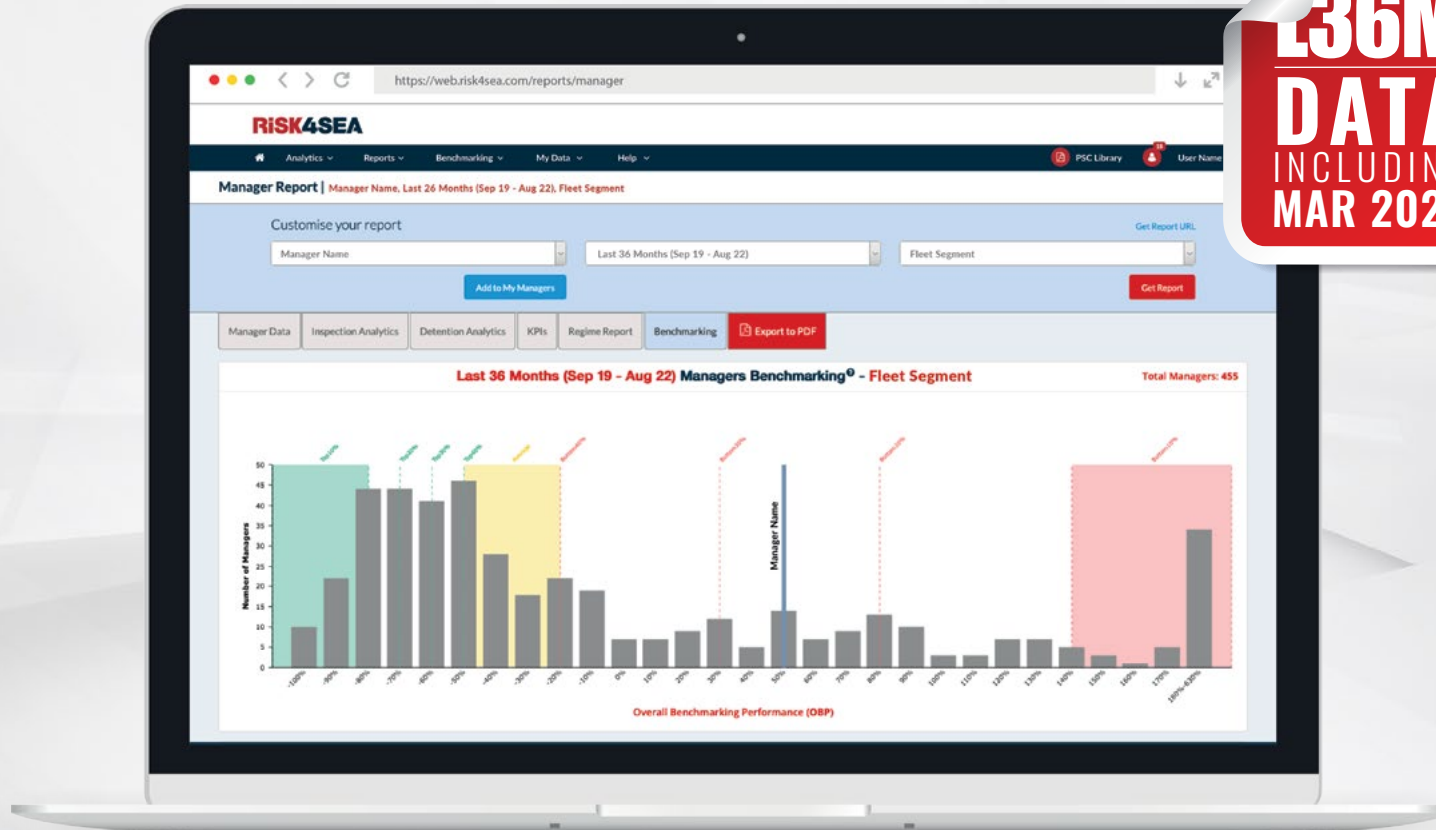


# RiSK4SEA

## Top PSC Performers

April 2025

**36M**  
**DATA**  
INCLUDING  
**MAR 2025**



► Dry Bulk    ► General Cargo    ► Tankers    ► LNG    ► LPG    ► Containers



**Apo Belokas**  
Founder & CEO

**RISK4SEA** is a **SaaS PSC Intelligence** platform, **illuminating PSC performance** to **Prepare/Assess** PSC inspections, **Benchmark** against competition and **Automate PSC** functions & alerts to **eliminate detentions** and **minimize OPEX**.

At RISK4SEA, we are dedicated to providing actionable PSC intelligence to illuminate Port State Control (PSC) performance and support the journey toward sustainable shipping.

With a focus on embracing excellence, we are thrilled to announce the 3<sup>rd</sup> edition of the **Top PSC Performers**, alongside the latest issue of our initiative called “**PSC Resilient 50**” that highlights the Top 50 Managers in terms of PSCIs without any detention. Both of which provide transparent access to the documentary evidence and in-depth research underpinning our findings.

We have meticulously mapped the entire PSC ecosystem—including PSC stations, ships, managers, and PSC inspections (PSCIs)—and finalized a robust benchmarking methodology, designed to be practical, accurate, and verifiable, ensuring it is both meaningful and applicable in real-world scenarios, incorporating geotagged PSCI data for the specific ship type, fleet segment, and age group.

We are excited to introduce this initiative, aiming to make PSC intelligence accessible to a broader segment of the market with the goal to update and circulate these rankings quarterly, covering the last 36 months of data.

By doing so, we aspire to illuminate PSC performance and promote Safety excellence, while also recognizing smaller players who often excel but may not receive the same spotlight as industry giants.

## Contents

### Bulkers

2. Handysize (<35k DWT)
3. Handymax (35-50k DWT)
4. Supramax (50-67k DWT)
5. Panamax (67-100k DWT)
6. Cape (>100k DWT)

### 7. General Cargo

### Tankers

8. Small Product (<25k DWT)
9. MR1/MR2 (25 – 60k DWT)
10. LR1/LR2 (60-125k DWT)
11. Suezmax (125-200k DWT)
12. VLCC (>200k DWT)

### 13. LNG/Gas Carriers

### 14. LPG Carrier

### Containers

15. Feeders (<10k DWT)
16. Large (10-90k DWT)
17. Ultra Large (>90k DWT)

### 18. Annex A

## Handysize (<35k DWT) (952 Managers, 15,596 PSCIs)

### Small PSCI Pool (10 - 24 PSCIs)

327 Managers | 4,920 PSCIs

**Polembros Bulkers Inc, GR**  
15 PSCIs | Top 10% | 3Q

**Empremar SA, CL**  
10 PSCIs | Top 10% | 3Q

**M-Maritime Corp, GR**  
21 PSCIs | Top 10% | 3Q

**CSL Group Inc, CA**  
17 PSCIs | Top 10% | 3Q

**China Steel Express Corp, TW**  
23 PSCIs | Top 20% | New Entry ★

**AM Nomikos Transworld Maritime, GR**  
20 PSCIs | Top 20% | 2Q

**Golden Arrow Maritime Co SA, GR**  
17 PSCIs | Top 20% | New Entry ★

**Marfin Management SAM, MC**  
21 PSCIs | Top 20% | New Entry ★

**Goldenport Shipmgmt Ltd, GR**  
14 PSCIs | Top 20% | 2Q

**Silver Top Shipping Co Ltd, CN**  
13 PSCIs | Top 20% | 3Q

### Medium PSCI Pool (25 - 49 PSCIs)

107 Managers | 3,517 PSCIs

**Cosco Shipping Bulk Co Ltd, CN**  
47 PSCIs | Top 20% | 3Q

**Dalex Shipping Co SA, GR**  
28 PSCIs | Top 20% | 3Q

**Adakent Gemi Isletmeciligi, TR**  
33 PSCIs | Top 20% | 3Q

**Newport SA, GR**  
39 PSCIs | Top 20% | 3Q

**Yangtze Navigation HK Co Ltd, CN**  
44 PSCIs | Top 20% | 3Q

**SMT Cement SP Zoo, PL**  
30 PSCIs | Top 20% | 3Q

**Sunship Schiffahrtskontor KG, DE**  
34 PSCIs | Top 20% | New Entry ★

**January Marine Inc, GR**  
28 PSCIs | Top 20% | 2Q

**Roks Maritime Inc, GR**  
30 PSCIs | Top 20% | New Entry ★

**Armador Gemi Isletmeciligi, TR**  
29 PSCIs | Top 20% | New Entry ★

### Large PSCI Pool (≥50 PSCIs)

58 Managers | 5,107 PSCIs

**Anglo-Eastern Ship Management, CN**  
210 PSCIs | Top 20% | 3Q

**H&J Marine Inc, JP**  
62 PSCIs | Top 20% | 3Q

**Fortius Ship Management Ltd, GR**  
60 PSCIs | Top 20% | 3Q

**Cosco Shipping Specialized, CN**  
57 PSCIs | Top 20% | 3Q

**First Marine Service Co Ltd, JP**  
54 PSCIs | Top 20% | 3Q

**Alloceans Shipping Co Ltd, GR**  
120 PSCIs | Top 30% | 3Q

**Dockendale Ship Management, AE**  
120 PSCIs | Top 30% | 2Q

**Pacific Basin Shipping Ltd, CN**  
364 PSCIs | Top 30% | New Entry ★

**Alma Shipmgmt & Trading, GR**  
76 PSCIs | Top 30% | 3Q

**Navigation Maritime Bulgare, BG**  
132 PSCIs | Top 30% | New Entry ★

### Benchmarking Dataset Breakdown

PSCI Pool	PSCI Range	Managers	PSCIs	PSCI %
Not Benchmarked	0 - 9 PSCIs	460	2,052	13.2%
Small PSCI Pool	10 - 24 PSCIs	327	4,920	31.5%
Medium PSCI Pool	25 - 49 PSCIs	107	3,517	22.6%
Large PSCI Pool	≥50 PSCIs	58	5,107	32.7%
		<b>952</b>	<b>15,596</b>	<b>100%</b>

### Notes on the Segment Benchmarking

**PSCIs:** Post State Control Inspections, for the specific segment and period

**Top xx%** corresponds to the PSC Performance Tier, see **Annex A**

**xQ** indicates number of **consecutive Quarters** in PSC Top 10

SCAN FOR METHODOLOGY



## Handymax (35-50k DWT) (585 Managers, 10,748 PSCIs)

### Small PSCI Pool (10 - 24 PSCIs)

174 Managers | 2,778 PSCIs

**Seastar Chartering Ltd, GR**  
15 PSCIs | Top 10% | 3Q

**Zeaborn Ship Management, SG**  
10 PSCIs | Top 10% | 2Q

**Oskar Wehr KG GmbH & Co, DE**  
11 PSCIs | Top 10% | New Entry ★

**FCN Management Inc, GR**  
10 PSCIs | Top 10% | 3Q

**MMS Bulkship Management, PH**  
15 PSCIs | Top 10% | 3Q

**Stallion Marine Services Ltd, GR**  
17 PSCIs | Top 20% | New Entry ★

**Order Shipping Co Ltd, GR**  
11 PSCIs | Top 20% | 2Q

**Helikon Shipping Enterprises, UK**  
10 PSCIs | Top 20% | New Entry ★

**IDC Denizcilik Sanayi, TR**  
10 PSCIs | Top 20% | 2Q

**Montana Ship Management Inc, GR**  
15 PSCIs | Top 20% | New Entry ★

### Medium PSCI Pool (25 - 49 PSCIs)

72 Managers | 2,305 PSCIs

**Total Shipmanagement Services, GR**  
27 PSCIs | Top 20% | 3Q

**Shenzhen Ocean Shipping Co Ltd, CN**  
27 PSCIs | Top 20% | New Entry ★

**M/Maritime Corp, GR**  
44 PSCIs | Top 20% | 3Q

**Cosco Shipping Xiamen Co Ltd, CN**  
31 PSCIs | Top 20% | 3Q

**Newport SA, GR**  
26 PSCIs | Top 20% | New Entry ★

**Marinsa Denizcilik AS, TR**  
49 PSCIs | Top 20% | 2Q

**Sejin Marine Co Ltd, KR**  
25 PSCIs | Top 20% | 2Q

**VG Shipmanagement SA, GR**  
25 PSCIs | Top 20% | New Entry ★

**Ocean Longevity Shipping, HK**  
34 PSCIs | Top 20% | 2Q

**Anglo-Eastern Antwerp NV, BE**  
28 PSCIs | Top 20% | New Entry ★

### Large PSCI Pool (≥50 PSCIs)

44 Managers | 4,267 PSCIs

**Cosco Shipping Bulk Co Ltd, CN**  
141 PSCIs | Top 20% | 3Q

**Intership Navigation Co, GR**  
53 PSCIs | Top 20% | 3Q

**Ya-Sa Gemi Isletmeciligi, TR**  
60 PSCIs | Top 20% | 3Q

**Pacific Basin Shipping Ltd, HK**  
253 PSCIs | Top 20% | 3Q

**Fleet Management Ltd, HK**  
180 PSCIs | Top 20% | 3Q

**MTM Ship Management Pvt, IN**  
79 PSCIs | Top 20% | 3Q

**Goldenport Shipmanagement Ltd, GR**  
82 PSCIs | Top 20% | 3Q

**Fusco Zhongping Ship Mgmt Co, CN**  
57 PSCIs | Top 20% | 3Q

**Navigation Maritime Bulgare, BG**  
114 PSCIs | Top 30% | New Entry ★

**Berge Bulk Maritime Pte Ltd, SG**  
56 PSCIs | Top 30% | New Entry ★

### Benchmarking Dataset Breakdown

PSCI Pool	PSCI Range	Managers	PSCIs	PSCI %
Not Benchmarked	0 - 9 PSCIs	296	1,309	12.3%
Small PSCI Pool	10 - 24 PSCIs	174	2,778	26.1%
Medium PSCI Pool	25 - 49 PSCIs	72	2,305	21.6%
Large PSCI Pool	≥50 PSCIs	44	4,267	40.0%
		<b>586</b>	<b>10,659</b>	<b>100%</b>

### Notes on the Segment Benchmarking

**PSCIs:** Post State Control Inspections, for the specific segment and period

**Top xx%** corresponds to the PSC Performance Tier, see **Annex A**

**xQ** indicates number of **consecutive Quarters** in PSC Top 10

SCAN FOR METHODOLOGY





## Supramax (50-67k DWT) (939 Managers, 25,847 PSCIs)

### Small PSCI Pool (13 - 24 PSCIs)

82 Managers | 3,249 PSCIs

**Aegean Bulk Co Inc, GR**  
16 PSCIs | Top 10% | 3Q

**Gourdomichalis Maritime SA, GR**  
18 PSCIs | Top 20% | 3Q

**Ocean Longevity Shipping, CN**  
13 PSCIs | Top 20% | New Entry ★

**Konkar Shipping Agencies SA, GR**  
14 PSCIs | Top 20% | 3Q

**Conbulk Shipmanagement Corp, GR**  
16 PSCIs | Top 20% | 2Q

**Berge Bulk Maritime Pte Ltd, SG**  
19 PSCIs | Top 20% | New Entry ★

**Algoma Ship Tech Ltd, CA**  
16 PSCIs | Top 20% | 3Q

**Novelty Shipmanagement SA, GR**  
13 PSCIs | Top 20% | New Entry ★

**Ikaros Shipping & Brokerage, GR**  
17 PSCIs | Top 20% | New Entry ★

**Jiangsu Ocean Shipping Bulk, CN**  
24 PSCIs | Top 20% | 2Q

### Medium PSCI Pool (25 - 49 PSCIs)

173 Managers | 5,766 PSCIs

**Shanghai CP Int Ship Mgmt, CN**  
26 PSCIs | Top 10% | 3Q

**Guangdong Yudean Shpg Co Ltd, CN**  
34 PSCIs | Top 10% | 3Q

**Adnoc Logistics & Services, AE**  
41 PSCIs | Top 20% | 3Q

**Zhejiang Shipping Group Co Ltd, CN**  
25 PSCIs | Top 20% | New Entry ★

**Century Bulk Carriers Mgmt Co, GR**  
28 PSCIs | Top 20% | 3Q

**Zhejiang Shipping Co Ltd, CN**  
33 PSCIs | Top 20% | 2Q

**Trust Bulkers Ltd, GR**  
32 PSCIs | Top 20% | New Entry ★

**Carras Hellas SA, GR**  
37 PSCIs | Top 20% | 3Q

**U-Ming Marine Transport, SG**  
31 PSCIs | Top 20% | 3Q

**Astra Shipmanagement Inc, GR**  
37 PSCIs | Top 20% | 3Q

### Large PSCI Pool (≥50 PSCIs)

127 Managers | 14,081 PSCIs

**M/Maritime Corp, GR**  
56 PSCIs | Top 20% | 3Q

**Laskaridis Maritime SA, GR**  
68 PSCIs | Top 20% | 3Q

**Shenzhen Ocean Shipping Co Ltd, CN**  
121 PSCIs | Top 20% | 3Q

**Suisse-Atlantique, CH**  
53 PSCIs | Top 20% | 3Q

**Hong Kong Ming Wah, HK**  
157 PSCIs | Top 20% | New Entry ★

**Niovis Shipping Co SA, GR**  
152 PSCIs | Top 20% | 3Q

**Enterprises Shipping & Trading, GR**  
71 PSCIs | Top 20% | 3Q

**Cosco Shipping Bulk Co Ltd, CN**  
433 PSCIs | Top 20% | 3Q

**Fleet Ship Management Pte Ltd, SG**  
195 PSCIs | Top 20% | 2Q

**Tianjin Cosbulk Ship Mgmt, CN**  
57 PSCIs | Top 20% | 2Q

### Benchmarking Dataset Breakdown

PSCI Pool	PSCI Range	Managers	PSCIs	PSCI %
Not Benchmarked	0 - 12 PSCIs	457	2,751	10.6%
Small PSCI Pool	13 - 24 PSCIs	182	3,249	12.6%
Medium PSCI Pool	25 - 49 PSCIs	173	5,766	22.3%
Large PSCI Pool	≥50 PSCIs	127	14,081	54.5%
		<b>939</b>	<b>25,847</b>	<b>100%</b>

### Notes on the Segment Benchmarking

**PSCIs:** Post State Control Inspections, for the specific segment and period

**Top xx%** corresponds to the PSC Performance Tier, see **Annex A**

**xQ** indicates number of **consecutive Quarters** in PSC Top 10

SCAN FOR METHODOLOGY



## Panamax (67-100k DWT) (824 Managers, 18,718 PSCIs)

### Small PSCI Pool (10 - 24 PSCIs)

203 Managers | 3,402 PSCIs

**Taihang Shipping Co Ltd, CN**  
12 PSCIs | Top 10% | 2Q

**Third Millenium Shipping Ltd, GR**  
13 PSCIs | Top 10% | 3Q

**Seamar Management SA, GR**  
11 PSCIs | Top 10% | New Entry ★

**Formosa Plastics Marine Corp, CN**  
17 PSCIs | Top 20% | 3Q

**Integrated Maritime Management, SG**  
20 PSCIs | Top 20% | 3Q

**Toei Korea Ltd, KR**  
11 PSCIs | Top 20% | 2Q

**Alberta Shipmanagement Ltd, GR**  
11 PSCIs | Top 20% | New Entry ★

**Fundador Naviera, GR**  
15 PSCIs | Top 20% | 3Q

**D'Amico Societa Di Navigazione, IT**  
13 PSCIs | Top 20% | New Entry ★

**Eastern Pacific Shipping Pte, SG**  
14 PSCIs | Top 20% | 2Q

### Medium PSCI Pool (25 - 49 PSCIs)

139 Managers | 5,061 PSCIs

**Bahri Ship Management DMCC, AE**  
36 PSCIs | Top 20% | 2Q

**Laskaridis Maritime SA, GR**  
29 PSCIs | Top 20% | 3Q

**V Ships LLC Boston, US**  
43 PSCIs | Top 20% | 3Q

**Tokei Kaiun KK, JP**  
31 PSCIs | Top 20% | 3Q

**Primerose Shipping Co Ltd, GR**  
37 PSCIs | Top 20% | 3Q

**Hong Kong Ming Wah, HK**  
41 PSCIs | Top 20% | New Entry ★

**Century Bulk Carriers Mgmt Co, GR**  
35 PSCIs | Top 20% | 3Q

**E Nomikos Corp, GR**  
40 PSCIs | Top 20% | 3Q

**Astra Shipmanagement Inc, GR**  
34 PSCIs | Top 20% | New Entry ★

**Dongguan Haichang Shpg, CN**  
25 PSCIs | Top 20% | New Entry ★

### Large PSCI Pool (≥50 PSCIs)

93 Managers | 8,446 PSCIs

**Neda Maritime Agency Co Ltd, GR**  
55 PSCIs | Top 20% | 3Q

**Diana Shipping Services SA, GR**  
116 PSCIs | Top 20% | 3Q

**Shenzhen Ocean Shipping Co Ltd, CN**  
73 PSCIs | Top 20% | 3Q

**Thenamaris Conbulk Inc, GR**  
69 PSCIs | Top 20% | New Entry ★

**Foremost Group, US**  
68 PSCIs | Top 20% | 3Q

**Toyo Sangyo Co Ltd, JP**  
59 PSCIs | Top 20% | 3Q

**Charterwell Maritime SA, GR**  
131 PSCIs | Top 20% | 3Q

**Safety Management Overseas, GR**  
51 PSCIs | Top 20% | New Entry ★

**Fukujin Kisen KK, JP**  
72 PSCIs | Top 20% | New Entry ★

**Seacon Ships Mgmt-Qingdao, CN**  
55 PSCIs | Top 20% | 2Q

### Benchmarking Dataset Breakdown

PSCI Pool	PSCI Range	Managers	PSCIs	PSCI %
Not Benchmarked	0 - 9 PSCIs	389	1,809	9.7%
Small PSCI Pool	10 - 24 PSCIs	203	3,402	18.2%
Medium PSCI Pool	25 - 49 PSCIs	139	5,061	27.0%
Large PSCI Pool	≥50 PSCIs	93	8,446	45.1%
		<b>824</b>	<b>18,718</b>	<b>100%</b>

### Notes on the Segment Benchmarking

**PSCIs:** Post State Control Inspections, for the specific segment and period

**Top xx%** corresponds to the PSC Performance Tier, see **Annex A**

**xQ** indicates number of **consecutive Quarters** in PSC Top 10

SCAN FOR METHODOLOGY



## Cape (>100k DWT) (384 Managers, 8,220 PSCIs)

### Small PSCI Pool (9 - 24 PSCIs)

92 Managers | 1,307 PSCIs

**Century Bulk Carriers Mgmt Co, GR**  
23 PSCIs | Top 20% | New Entry ★

**Empresa Naviera Elcano SA, ES**  
14 PSCIs | Top 20% | 3Q

**Sincere Navigation Corp, TW**  
21 PSCIs | Top 20% | 2Q

**Yamamaru Kisen KK, JP**  
12 PSCIs | Top 20% | 3Q

**Alberta Shipmanagement Ltd, GR**  
9 PSCIs | Top 20% | New Entry ★

**Toyo Kaiun Co Ltd, JP**  
13 PSCIs | Top 20% | 3Q

**Hokoku Marine Co Ltd, JP**  
12 PSCIs | Top 20% | 2Q

**Active Denizcilik Ve Gemi, TR**  
10 PSCIs | Top 20% | 3Q

**Osaka Fleet Co Ltd, JP**  
9 PSCIs | Top 20% | 3Q

**Hsin Chien Marine Co Ltd, CN**  
9 PSCIs | Top 20% | New Entry ★

### Medium PSCI Pool (25 - 49 PSCIs)

61 Managers | 2,142 PSCIs

**Shandong Fleet Management Ltd, CN**  
45 PSCIs | Top 20% | 2Q

**Fleet Ship Management Pte Ltd, SG**  
46 PSCIs | Top 20% | 3Q

**U-Ming Marine Xiamen Intl Ship, CN**  
50 PSCIs | Top 20% | 3Q

**SDSC Ship Management Co Ltd, CN**  
41 PSCIs | Top 20% | 3Q

**Shoei Ship Management Pte Ltd, SG**  
28 PSCIs | Top 20% | New Entry ★

**Olympia Ocean Carriers Ltd, CY**  
31 PSCIs | Top 20% | 3Q

**Tai Chong Cheang Steamship Co, CN**  
29 PSCIs | Top 30% | 3Q

**Mitsubishi Ore Transport Co, JP**  
30 PSCIs | Top 30% | New Entry ★

**Mizuho Sangyo Co Ltd, JP**  
33 PSCIs | Top 30% | 3Q

**Safe Bulkiers Management Ltd, CY**  
25 PSCIs | Top 30% | 3Q

### Large PSCI Pool (≥50 PSCIs)

45 Managers | 4,055 PSCIs

**Hong Kong Ming Wah, HK**  
71 PSCIs | Top 20% | New Entry ★

**Hong Kong Ming Wah Shpg Co Ltd, HK**  
66 PSCIs | Top 20% | 3Q

**Maran Dry Management Inc, GR**  
180 PSCIs | Top 20% | 3Q

**Golden Top Shipping Co Ltd, CN**  
51 PSCIs | Top 20% | 3Q

**Qilu Ship Management Co Ltd, HK**  
69 PSCIs | Top 20% | 3Q

**Qingdao Winning Intl Ships, CN**  
67 PSCIs | Top 30% | 3Q

**H-Line Shipping Co Ltd, KR**  
72 PSCIs | Top 30% | 3Q

**Seanergy Shipmanagement Corp, GR**  
75 PSCIs | Top 30% | 3Q

**Bernhard Schulte, IN**  
52 PSCIs | Top 30% | New Entry ★

**Anglo-Eastern Ship Mgmt, HK**  
151 PSCIs | Top 30% | 2Q

### Benchmarking Dataset Breakdown

PSCI Pool	PSCI Range	Managers	PSCIs	PSCI %
Not Benchmarked	0 - 8 PSCIs	186	716	8.7%
Small PSCI Pool	9 - 24 PSCIs	92	1,307	15.9%
Medium PSCI Pool	25 - 49 PSCIs	61	2,142	26.1%
Large PSCI Pool	≥50 PSCIs	45	4,055	49.3%
		<b>384</b>	<b>8,220</b>	<b>100%</b>

### Notes on the Segment Benchmarking

**PSCIs:** Post State Control Inspections, for the specific segment and period

**Top xx%** corresponds to the PSC Performance Tier, see **Annex A**

**xQ** indicates number of **consecutive Quarters** in PSC Top 10

SCAN FOR METHODOLOGY





## General Cargo (2,188 Managers, 41,406 PSCIs)

### Small PSCI Pool (10 - 24 PSCIs)

618 Managers | 9,445 PSCIs

**Glory-Pacific Shipping S Pte, SG**  
12 PSCIs | Top 10% | 3Q

**White Panama SA, JP**  
10 PSCIs | Top 10% | 3Q

**Swire Shipping Pte Ltd, SG**  
14 PSCIs | Top 10% | 3Q

**G-Marine Service Co Ltd, KR**  
12 PSCIs | Top 10% | 3Q

**Obe Ships Management Co LLC, AE**  
15 PSCIs | Top 10% | New Entry ★

**S-Bulkers Ltd, GR**  
12 PSCIs | Top 10% | 3Q

**Filharmony Shipmgmt Inc, PH**  
17 PSCIs | Top 10% | 2Q

**Thor Dahl Shipmanagement SA, NO**  
14 PSCIs | Top 10% | New Entry ★

**SAM Shipping VOF, NL**  
10 PSCIs | Top 20% | New Entry ★

**Yaka Gemi Isletmeciligi Sanayi, TR**  
10 PSCIs | Top 20% | 2Q

### Medium PSCI Pool (25 - 49 PSCIs)

317 Managers | 11,045 PSCIs

**OSM Maritime AS, NO**  
26 PSCIs | Top 20% | New Entry ★

**Team Fuel Corp, GR**  
32 PSCIs | Top 20% | 3Q

**Seaspire Maritime Inc, GR**  
27 PSCIs | Top 20% | 3Q

**Nitta Kisen Kaisha Ltd, JP**  
29 PSCIs | Top 20% | New Entry ★

**Tianjin Shun Xin Yuan Shpg Co, CN**  
42 PSCIs | Top 20% | New Entry ★

**Tamar Ship Management Pte Ltd, SG**  
50 PSCIs | Top 20% | 3Q

**Lizstar Singapore Pte Ltd, SG**  
46 PSCIs | Top 20% | 3Q

**New Century Overseas Mgmt Inc, PH**  
28 PSCIs | Top 20% | 3Q

**Island View Shipping Services, SG**  
46 PSCIs | Top 20% | New Entry ★

**Navesco SA, CO**  
50 PSCIs | Top 20% | New Entry ★

### Large PSCI Pool (≥50 PSCIs)

156 Managers | 16,052 PSCIs

**Glory Navigation Co Ltd, TW**  
79 PSCIs | Top 10% | 3Q

**Candler Schiffahrt GmbH, DE**  
51 PSCIs | Top 20% | 2Q

**H&J Marine Inc, JP**  
91 PSCIs | Top 20% | 2Q

**Dalex Shipping Co SA, GR**  
63 PSCIs | Top 20% | 3Q

**PACC Ship Managers Pte Ltd, SG**  
91 PSCIs | Top 20% | 3Q

**Brave Maritime Corp Inc, GR**  
65 PSCIs | Top 20% | 3Q

**Intership Navigation Co, CY**  
178 PSCIs | Top 20% | 3Q

**Cosco Shipping Specialized, CN**  
359 PSCIs | Top 20% | New Entry ★

**Toko Kaiun Kaisha Ltd, JP**  
79 PSCIs | Top 20% | 3Q

**Nova Ship Tech SA, CH**  
53 PSCIs | Top 20% | New Entry ★

### Benchmarking Dataset Breakdown

PSCI Pool	PSCI Range	Managers	PSCIs	PSCI %
Not Benchmarked	0 - 9 PSCIs	1,097	4,884	11.8%
Small PSCI Pool	10 - 24 PSCIs	618	9,445	22.8%
Medium PSCI Pool	25 - 49 PSCIs	317	11,045	26.7%
Large PSCI Pool	≥50 PSCIs	156	16,032	38.7%
		<b>2,188</b>	<b>41,406</b>	<b>100%</b>

### Notes on the Segment Benchmarking

**PSCIs:** Post State Control Inspections, for the specific segment and period

**Top xx%** corresponds to the PSC Performance Tier, see **Annex A**

**xQ** indicates number of **consecutive Quarters** in PSC Top 10

SCAN FOR METHODOLOGY





## Small Product (<25k DWT) (761 Managers, 12,409 PSCIs)

### Small PSCI Pool (7 – 24 PSCIs)

239 Managers | 3,139 PSCIs

**Atlantas Ship Management Ltd, UK**  
23 PSCIs | Top 10% | New Entry ★

**Aeromic Shipping S Pte Ltd, SG**  
13 PSCIs | Top 10% | New Entry ★

**Flumar Transportes De Quimicos, BR**  
10 PSCIs | Top 10% | 3Q

**Unibros Shipping Corp, GR**  
10 PSCIs | Top 10% | New Entry ★

**JR Orion Services Pte Ltd, SG**  
10 PSCIs | Top 10% | New Entry ★

**Waibert Navigation Co Ltd, HK**  
9 PSCIs | Top 10% | 3Q

**MISC Shipmanagement L Pte Ltd, MY**  
8 PSCIs | Top 10% | New Entry ★

**Dania Ship Management A/S, DK**  
24 PSCIs | Top 10% | 3Q

**ASP Ship Management, SG**  
15 PSCIs | Top 10% | 3Q

**Shanghai Anrita Shpg Co Ltd, CN**  
9 PSCIs | Top 10% | 2Q

### Medium PSCI Pool (25 – 49 PSCIs)

85 Managers | 2,920 PSCIs

**Smart Tankers Inc, GR**  
25 PSCIs | Top 10% | New Entry ★

**VLK Traders S Pte Ltd, SG**  
39 PSCIs | Top 20% | 3Q

**Pakoil Denizcilik Ticaret, TR**  
48 PSCIs | Top 20% | 3Q

**Suntech Ship Management SG**  
26 PSCIs | Top 20% | 3Q

**Pritchard-Gordon Tankers Ltd, UK**  
38 PSCIs | Top 20% | New Entry ★

**Dongzhan Shipping Co Ltd, CN**  
36 PSCIs | Top 20% | New Entry ★

**Cosco Shipping Asphalt Hainan, CN**  
43 PSCIs | Top 20% | 3Q

**Lotus Shipping Co Ltd, GR**  
25 PSCIs | Top 20% | New Entry ★

**Utkilen AS, NO**  
34 PSCIs | Top 20% | 3Q

**Beykar Denizcilik Gemi, TR**  
34 PSCIs | Top 20% | New Entry ★

### Large PSCI Pool (≥50 PSCIs)

58 Managers | 5,248 PSCIs

**YMN Tanker Deniz Isletmeciligi, TR**  
60 PSCIs | Top 20% | New Entry ★

**Marin Shipmanagement BV, NL**  
52 PSCIs | Top 20% | 3Q

**Christiania Shipping A/S, DK**  
63 PSCIs | Top 20% | 3Q

**Stolt Tankers BV, NL**  
247 PSCIs | Top 20% | 3Q

**Fantasea Ship Management Pte, SG**  
86 PSCIs | Top 20% | 3Q

**New Shipping Kaisha Ltd, JP**  
85 PSCIs | Top 20% | 3Q

**Executive Ship Management, SG**  
65 PSCIs | Top 20% | New Entry ★

**Scot Gemi Isletmeciligi AS, TR**  
91 PSCIs | Top 20% | 3Q

**Navquim Ship Management, NL**  
84 PSCIs | Top 30% | 3Q

**TB Marine Shipmanagement, DE**  
54 PSCIs | Top 30% | 2Q

### Benchmarking Dataset Breakdown

PSCI Pool	PSCI Range	Managers	PSCIs	PSCI %
Not Benchmarked	0 – 6 PSCIs	379	1,102	8.9%
Small PSCI Pool	7 – 24 PSCIs	239	3,139	25.3%
Medium PSCI Pool	25 – 49 PSCIs	85	2,920	23.5%
Large PSCI Pool	≥50 PSCIs	58	5,248	42.3%
		<b>761</b>	<b>12,409</b>	<b>100%</b>

### Notes on the Segment Benchmarking

**PSCIs:** Post State Control Inspections, for the specific segment and period

**Top xx%** corresponds to the PSC Performance Tier, see **Annex A**

**xQ** indicates number of **consecutive Quarters** in PSC Top 10

SCAN FOR METHODOLOGY



## MR1/MR2 (25 – 60k DWT) (554 Managers, 14,853 PSCIs)

### Small PSCI Pool (7 – 24 PSCIs)

128 Managers | 1,846 PSCIs

**Unibros Shipping Corp, GR**  
9 PSCIs | Top 10% | 3Q

**Pleiades Shipping Agents SA, GR**  
12 PSCIs | Top 10% | 3Q

**Ionia Management SA, GR**  
14 PSCIs | Top 10% | 3Q

**Grace Management SA, GR**  
10 PSCIs | Top 10% | 3Q

**Tsakos Shipping & Trading SA, GR**  
22 PSCIs | Top 20% | 3Q

**Interorient Marine Services, CY**  
9 PSCIs | Top 20% | New Entry ★

**Valles Steamship Inc, CA**  
15 PSCIs | Top 20% | 3Q

**Sun Enterprises Ltd, GR**  
23 PSCIs | Top 20% | New Entry ★

**Sao Viet Petrol Transportation, VN**  
10 PSCIs | Top 20% | New Entry ★

**Tsakos Conbulk Services TCB, GR**  
23 PSCIs | Top 20% | New Entry ★

### Medium PSCI Pool (25 – 49 PSCIs)

62 Managers | 2,287 PSCIs

**Capital Ship Management Corp, GR**  
33 PSCIs | Top 20% | 2Q

**D'Amico Ship Management SRL, IT**  
36 PSCIs | Top 20% | 3Q

**Tankerska Plovdba DD, HR**  
48 PSCIs | Top 20% | 2Q

**Vosco, VN**  
27 PSCIs | Top 20% | 3Q

**V Ships Germany GmbH, DE**  
25 PSCIs | Top 20% | New Entry ★

**Stasco, UK**  
40 PSCIs | Top 20% | 3Q

**Zodiac Maritime Ltd, UK**  
30 PSCIs | Top 20% | New Entry ★

**Eletson Corp, GR**  
40 PSCIs | Top 20% | 3Q

**Norbulk Shipping Ltd, UK**  
29 PSCIs | Top 20% | 3Q

**Empire Navigation Inc, GR**  
49 PSCIs | Top 20% | New Entry ★

### Large PSCI Pool (≥50 PSCIs)

73 Managers | 9,876 PSCIs

**D'Amico Societa Di Navigazione, IT**  
73 PSCIs | Top 20% | New Entry ★

**Latsco Marine Management Inc, GR**  
59 PSCIs | Top 20% | 3Q

**Histria Shipmanagement SRL, RO**  
63 PSCIs | Top 20% | New Entry ★

**MTM Ship Management Pte Ltd, SG**  
121 PSCIs | Top 20% | 3Q

**Anglo-Eastern Tanker Mgmt, HK**  
101 PSCIs | Top 20% | 3Q

**Avin International Ltd, GR**  
67 PSCIs | Top 20% | 3Q

**Navios Tankers Management Inc, GR**  
73 PSCIs | Top 20% | New Entry ★

**Cosco Shipping Energy Trans, CN**  
87 PSCIs | Top 20% | New Entry ★

**Eastern Mediterranean Mtmte, GR**  
138 PSCIs | Top 20% | 3Q

**Thenamaris Ships Mgmt, GR**  
84 PSCIs | Top 20% | New Entry ★

### Benchmarking Dataset Breakdown

PSCI Pool	PSCI Range	Managers	PSCIs	PSCI %
Not Benchmarked	0 – 6 PSCIs	291	844	5.7%
Small PSCI Pool	7 – 24 PSCIs	128	1,846	12.4%
Medium PSCI Pool	25 – 49 PSCIs	62	2,287	15.4%
Large PSCI Pool	≥50 PSCIs	73	9,876	66.5%
		<b>554</b>	<b>14,853</b>	<b>100%</b>

### Notes on the Segment Benchmarking

**PSCIs:** Post State Control Inspections, for the specific segment and period

**Top xx%** corresponds to the PSC Performance Tier, see **Annex A**

**xQ** indicates number of **consecutive Quarters** in PSC Top 10

SCAN FOR METHODOLOGY



## LR1/LR2 (60-125k DWT) (437 Managers, 5,911 PSCIs)

### Small PSCI Pool (5 - 24 PSCIs)

126 Managers | 1,358 PSCIs

**Eletson Shipmanagement Inc, GR**  
7 PSCIs | Top 10% | 3Q

**Gulf Energy Maritime Gem, AE**  
7 PSCIs | Top 10% | 3Q

**Enterprises Shipping & Trading, GR**  
16 PSCIs | Top 10% | 3Q

**Tai Chong Cheang Steamship, HK**  
16 PSCIs | Top 10% | 3Q

**Star Ocean Shipmanagement Ltd, CN**  
5 PSCIs | Top 20% | 3Q

**Northern Marine Management Ltd, UK**  
5 PSCIs | Top 20% | 2Q

**Donnelly Tanker Management, CY**  
12 PSCIs | Top 20% | 2Q

**Nanjing Haigao Shipping Co Ltd, CN**  
5 PSCIs | Top 20% | 2Q

**Springfield Shipping Co, GR**  
5 PSCIs | Top 20% | New Entry ★

**Transpetrol TM AS, NO**  
10 PSCIs | Top 20% | New Entry ★

### Medium PSCI Pool (25 - 49 PSCIs)

46 Managers | 1,653 PSCIs

**Ionic Tankers Mgt Inc, GR**  
33 PSCIs | Top 20% | 2Q

**Samos Steamship Co GR**  
43 PSCIs | Top 20% | 3Q

**Sun Enterprises Ltd, GR**  
33 PSCIs | Top 20% | 3Q

**Pleiades Shipping Agents SA, GR**  
38 PSCIs | Top 20% | 3Q

**Wallem Shipmanagement Ltd, HK**  
39 PSCIs | Top 20% | 2Q

**Paradise Navigation SA, GR**  
28 PSCIs | Top 20% | 2Q

**Tsakos Columbia Shipmgmt SA, GR**  
50 PSCIs | Top 20% | 2Q

**OSM Bergen Tank AS, NO**  
33 PSCIs | Top 20% | 3Q

**Reederei Nord BV, NL**  
46 PSCIs | Top 20% | New Entry ★

**Chevron Transport Corp Ltd, US**  
37 PSCIs | Top 20% | 3Q

### Large PSCI Pool (≥50 PSCIs)

25 Managers | 2,439 PSCIs

**MISC Shipmanagement S Pte, SG**  
81 PSCIs | Top 20% | New Entry ★

**Teekay Marine, SG**  
87 PSCIs | Top 20% | 3Q

**TMS Tankers Ltd, GR**  
119 PSCIs | Top 20% | 3Q

**Tsakos Shipping & Trading SA, GR**  
116 PSCIs | Top 20% | 3Q

**Columbia Shipmanagement, DE**  
135 PSCIs | Top 20% | 3Q

**Thenamaris Ships Management, GR**  
126 PSCIs | Top 20% | 3Q

**Navios Tankers Management Inc, GR**  
55 PSCIs | Top 20% | New Entry ★

**International Tanker Mngmt Ltd, AE**  
56 PSCIs | Top 20% | 3Q

**Zodiac Maritime Ltd, UK**  
66 PSCIs | Top 20% | 3Q

**Minerva Marine Inc, GR**  
149 PSCIs | Top 30% | New Entry ★

### Benchmarking Dataset Breakdown

PSCI Pool	PSCI Range	Managers	PSCIs	PSCI %
Not Benchmarked	0 - 4 PSCIs	240	461	7.8%
Small PSCI Pool	5 - 24 PSCIs	126	1,358	23.0%
Medium PSCI Pool	25 - 49 PSCIs	46	1,653	28.0%
Large PSCI Pool	≥50 PSCIs	25	2,439	41.3%
		<b>437</b>	<b>5,911</b>	<b>100%</b>

### Notes on the Segment Benchmarking

**PSCIs:** Post State Control Inspections, for the specific segment and period

**Top xx%** corresponds to the PSC Performance Tier, see **Annex A**

**xQ** indicates number of **consecutive Quarters** in PSC Top 10

SCAN FOR METHODOLOGY





## Suezmax (125-200k DWT) (212 Managers, 2,257 PSCIs)

### Small PSCI Pool (4 - 9 PSCIs)

46 Managers | 240 PSCIs

**HMM Ocean Service Co Ltd, KR**  
4 PSCIs | Top 10% | 3Q

**OSM Ship Management AS, NO**  
4 PSCIs | Top 10% | New Entry ★

**Liquimar Tankers Mgmt Services, GR**  
8 PSCIs | Top 20% | 3Q

**Chandris Hellas Inc, GR**  
7 PSCIs | Top 20% | 3Q

**Tucana Seaways Inc, LR**  
4 PSCIs | Top 20% | 2Q

**Unisea Shipping Ltd, GR**  
9 PSCIs | Top 20% | 3Q

**Shanghai Yuan Shipping Co Ltd, CN**  
4 PSCIs | Top 20% | 3Q

**Empire Navigation Inc, GR**  
5 PSCIs | Top 20% | 3Q

**Dakai Shipping Ltd, CN**  
4 PSCIs | Top 20% | 3Q

**Sea Trade Marine SA, GR**  
4 PSCIs | Top 20% | New Entry ★

### Medium PSCI Pool (10 - 29 PSCIs)

35 Managers | 656 PSCIs

**LSC Shipmanagement SIA, LV**  
13 PSCIs | Top 10% | 3Q

**OSM Maritime Ship Management, SG**  
12 PSCIs | Top 10% | 3Q

**Avin International Ltd, GR**  
18 PSCIs | Top 20% | 3Q

**Great Eastern Shipping Co Ltd, IN**  
17 PSCIs | Top 20% | 3Q

**Altera Infrastructure Norway, NO**  
15 PSCIs | Top 20% | 3Q

**D'Amico Fratelli Spa, IT**  
15 PSCIs | Top 20% | New Entry ★

**Central Mare Inc, GR**  
23 PSCIs | Top 20% | 2Q

**Springfield Shipping Co, GR**  
14 PSCIs | Top 20% | 3Q

**Sun Enterprises Ltd, GR**  
12 PSCIs | Top 20% | 3Q

**Almi Tankers SA, GR**  
29 PSCIs | Top 20% | 3Q

### Large PSCI Pool (≥30 PSCIs)

22 Managers | 1,163 PSCIs

**Anglo-Eastern Tanker Mgmt, SG**  
51 PSCIs | Top 20% | 3Q

**Teekay Marine Singapore, SG**  
105 PSCIs | Top 20% | 3Q

**Maran Tankers Management Inc, GR**  
58 PSCIs | Top 20% | 3Q

**Thenamaris Ships Management, GR**  
36 PSCIs | Top 20% | 2Q

**TMS Tankers Ltd, GR**  
70 PSCIs | Top 20% | 3Q

**Eastern Pacific Shipping Pte, SG**  
37 PSCIs | Top 30% | 3Q

**Columbia Shipmanagement Ltd, CY**  
37 PSCIs | Top 30% | 3Q

**Nereus Shipping SA, GR**  
48 PSCIs | Top 30% | New Entry ★

**International Tanker Mngmt Ltd, AE**  
91 PSCIs | Top 30% | 3Q

**Marine Trust Ltd, GR**  
46 PSCIs | Top 30% | New Entry ★

### Benchmarking Dataset Breakdown

PSCI Pool	PSCI Range	Managers	PSCIs	PSCI %
Not Benchmarked	0 - 3 PSCIs	109	198	8.8%
Small PSCI Pool	4 - 9 PSCIs	46	240	10.6%
Medium PSCI Pool	10 - 29 PSCIs	35	656	29.1%
Large PSCI Pool	≥30 PSCIs	22	1,163	51.5%
		<b>212</b>	<b>2,257</b>	<b>100%</b>

### Notes on the Segment Benchmarking

**PSCIs:** Post State Control Inspections, for the specific segment and period

**Top xx%** corresponds to the PSC Performance Tier, see **Annex A**

**xQ** indicates number of **consecutive Quarters** in PSC Top 10

SCAN FOR METHODOLOGY





## VLCC (>200k DWT) (207 Managers, 1,910 PSCIs)

### Small PSCI Pool (4 - 9 PSCIs)

41 Managers | 229 PSCIs

**Enesel SA, GR**  
7 PSCIs | Top 10% | 3Q

**Samos Steamship Co, GR**  
4 PSCIs | Top 20% | 3Q

**Suntech Ship Management, SG**  
5 PSCIs | Top 20% | 3Q

**Fleet Ship Management Pte Ltd, SG**  
5 PSCIs | Top 20% | 3Q

**Golden Ships Management Co Ltd, HK**  
7 PSCIs | Top 20% | 2Q

**Pacific Shipmanagement, CN**  
4 PSCIs | Top 20% | 2Q

**Wallem Gmbh & Co KG, DE**  
4 PSCIs | Top 20% | 2Q

**Amarine Ship Management Pte, SG**  
5 PSCIs | Top 20% | New Entry ★

**Polar Star Management Ltd, CN**  
5 PSCIs | Top 20% | New Entry ★

**G-Marine Service Co Ltd, KR**  
7 PSCIs | Top 20% | New Entry ★

### Medium PSCI Pool (10 - 24 PSCIs)

37 Managers | 567 PSCIs

**Sun Enterprises Ltd, GR**  
10 PSCIs | Top 10% | New Entry ★

**Chandris Hellas Inc, GR**  
11 PSCIs | Top 10% | 3Q

**Zodiac Maritime Ltd, UK**  
13 PSCIs | Top 20% | 2Q

**Eastern Mediterranean Maritime, GR**  
13 PSCIs | Top 20% | 3Q

**Neda Maritime Agency Co Ltd, GR**  
18 PSCIs | Top 20% | 3Q

**Shining Gem Ltd, CN**  
10 PSCIs | Top 20% | 3Q

**Almi Tankers SA, GR**  
13 PSCIs | Top 20% | 3Q

**Thenamaris Ships Management, GR**  
21 PSCIs | Top 20% | 3Q

**Eneos Ocean Corp, JP**  
10 PSCIs | Top 20% | 3Q

**Synergy Navis Marine Pvt Ltd, IN**  
15 PSCIs | Top 20% | New Entry ★

### Large PSCI Pool (≥25 PSCIs)

16 Managers | 926 PSCIs

**Bahri Ship Management DMCC, AE**  
51 PSCIs | Top 30% | 2Q

**Springfield Shipping Co, GR**  
47 PSCIs | Top 30% | 3Q

**Cosco Shipping Energy Trans, CN**  
92 PSCIs | Top 30% | 3Q

**Goodwood Ship Management, SG**  
61 PSCIs | Top 30% | 3Q

**Kyklades Maritime Corp, GR**  
30 PSCIs | Top 30% | 3Q

**International Tanker Mngmt Ltd, AE**  
26 PSCIs | Top 30% | 3Q

**Anglo-Eastern Ship Management, GR**  
105 PSCIs | Top 30% | New Entry ★

**Maran Tankers Management Inc, GR**  
108 PSCIs | Top 30% | 3Q

**Associated Maritime Co Ltd, HK**  
135 PSCIs | Top 40% | 3Q

**HMM Ocean Service Co Ltd, KR**  
28 PSCIs | Top 40% | 3Q

### Benchmarking Dataset Breakdown

PSCI Pool	PSCI Range	Managers	PSCIs	PSCI %
Not Benchmarked	0 - 3 PSCIs	113	188	9.8%
Small PSCI Pool	4 - 9 PSCIs	41	229	12.0%
Medium PSCI Pool	10 - 24 PSCIs	37	567	29.7%
Large PSCI Pool	≥25 PSCIs	16	926	48.5%
		<b>207</b>	<b>1,910</b>	<b>100%</b>

### Notes on the Segment Benchmarking

**PSCIs:** Post State Control Inspections, for the specific segment and period

**Top xx%** corresponds to the PSC Performance Tier, see **Annex A**

**xQ** indicates number of **consecutive Quarters** in PSC Top 10

SCAN FOR METHODOLOGY



## LNG/Gas Carriers (81 Managers, 1,865 PSCIs)

### Small PSCI Pool (10 – 19 PSCIs)

21 Managers | 305 PSCIs

**BP Shipping Ltd, UK**  
20 PSCIs | Top 10% | 3Q

**Minerva Gas Inc, GR**  
14 PSCIs | Top 10% | 3Q

**Alpha Gas SA, GR**  
12 PSCIs | Top 10% | 3Q

**HMM Ocean Service Co Ltd, KR**  
11 PSCIs | Top 20% | 3Q

**Wilhelmsen Ship Mgmt Sdn Bhd, MY**  
20 PSCIs | Top 20% | 3Q

**MMS Co Ltd, JP**  
11 PSCIs | Top 20% | 3Q

**Chevron Transport Corp Ltd, US**  
13 PSCIs | Top 20% | New Entry ★

**Executive Ship Management, GR**  
11 PSCIs | Top 20% | New Entry ★

**Hyundai LNG Shipping Co Ltd, KR**  
15 PSCIs | Top 20% | 2Q

**Hoegh Evi Fleet Mgmt AS, NO**  
10 PSCIs | Top 30% | 3Q

### Medium PSCI Pool (20 – 34 PSCIs)

14 Managers | 349 PSCIs

**Celsius Tech Ltd, CN**  
22 PSCIs | Top 20% | 3Q

**Capital Gas Ship Management, GR**  
21 PSCIs | Top 20% | New Entry ★

**Thenamaris LNG Inc, GR**  
32 PSCIs | Top 30% | 3Q

**Empresa Naviera Elcano SA, ES**  
22 PSCIs | Top 30% | 3Q

**Flex LNG Fleet Management AS, NO**  
30 PSCIs | Top 30% | New Entry ★

**Seapeak Maritime, SG**  
29 PSCIs | Top 30% | 3Q

**SK Shipping Co Ltd, KR**  
31 PSCIs | Top 30% | 3Q

**NYK Shipmanagement Pte Ltd, SG**  
25 PSCIs | Top 40% | 2Q

**Gazoocean SAS, FR**  
24 PSCIs | Top 40% | New Entry ★

**China LNG Shipping Intl Co Ltd, HK**  
21 PSCIs | Top 40% | New Entry ★

### Large PSCI Pool (≥35 PSCIs)

17 Managers | 1,105 PSCIs

**BW Fleet Management AS, NO**  
73 PSCIs | Top 20% | 3Q

**Dynagas Ltd, GR**  
40 PSCIs | Top 20% | New Entry ★

**Gaslog LNG Services Ltd, GR**  
90 PSCIs | Top 20% | 3Q

**Cool Company Management AS, NO**  
51 PSCIs | Top 20% | 3Q

**TMS Cardiff Gas Ltd, GR**  
61 PSCIs | Top 20% | 3Q

**Maran Gas Maritime Inc, GR**  
140 PSCIs | Top 30% | 3Q

**Knutsen OAS Shipping AS, NO**  
104 PSCIs | Top 30% | 3Q

**Bernhard Schulte Shipmgmt, GR**  
48 PSCIs | Top 30% | New Entry ★

**Northern Marine Mgmt Ltd, UK**  
36 PSCIs | Top 40% | New Entry ★

**KLC SM Co Ltd, KR**  
38 PSCIs | Top 40% | New Entry ★

### Benchmarking Dataset Breakdown

PSCI Pool	PSCI Range	Managers	PSCIs	PSCI %
Not Benchmarked	0 – 9 PSCIs	29	106	5.7%
Small PSCI Pool	10 – 19 PSCIs	21	305	16.4%
Medium PSCI Pool	20 – 34 PSCIs	14	349	18.7%
Large PSCI Pool	≥35 PSCIs	17	1,105	59.2%
		<b>81</b>	<b>1,865</b>	<b>100%</b>

### Notes on the Segment Benchmarking

**PSCIs:** Post State Control Inspections, for the specific segment and period

**Top xx%** corresponds to the PSC Performance Tier, see **Annex A**

**xQ** indicates number of **consecutive Quarters** in PSC Top 10

SCAN FOR METHODOLOGY



## LPG Carriers (251 Managers, 4,510 PSCIs)

### Small PSCI Pool (9 - 19 PSCIs)

59 Managers | 743 PSCIs

**Fleet Ship Management Pte Ltd, SG**  
11 PSCIs | Top 10% | 3Q

**Synergas SRL, IT**  
13 PSCIs | Top 20% | 3Q

**Roswell Tankers Corp, GR**  
12 PSCIs | Top 20% | 3Q

**Northern Marine Management, US**  
12 PSCIs | Top 20% | 3Q

**Mantagas Denizcilik Ve Ticaret, TR**  
12 PSCIs | Top 20% | 3Q

**Chemgas Holding BV, NL**  
13 PSCIs | Top 20% | New Entry ★

**Blue Energy & Maritime Co Ltd, VN**  
11 PSCIs | Top 20% | 2Q

**Prime Gas Management Inc, GR**  
11 PSCIs | Top 20% | New Entry ★

**K Marine Ship Mgmt Pte Ltd, SG**  
10 PSCIs | Top 20% | New Entry ★

**MMS Co Ltd, JP**  
13 PSCIs | Top 20% | 3Q

### Medium PSCI Pool (20 - 49 PSCIs)

35 Managers | 1,135 PSCIs

**Norbulk Shipping Ltd, UK**  
28 PSCIs | Top 10% | 3Q

**Western Shipping Pte Ltd, SG**  
34 PSCIs | Top 20% | 3Q

**MOL Tankship Management Pte, SG**  
48 PSCIs | Top 20% | 3Q

**Harpaingas Gmbh & Co KG, DE**  
49 PSCIs | Top 20% | 3Q

**Carbofin Spa, IT**  
29 PSCIs | Top 20% | 2Q

**Apollo Ship Management Pte Ltd, SG**  
26 PSCIs | Top 20% | New Entry ★

**Eletson Corp, GR**  
23 PSCIs | Top 20% | 3Q

**Sloman Neptun Schiffahrts, DE**  
43 PSCIs | Top 20% | 3Q

**Laeisz Reederei, DE**  
46 PSCIs | Top 20% | New Entry ★

**Wah Kwong Ship Mgmt, CN**  
22 PSCIs | Top 20% | New Entry ★

### Large PSCI Pool (≥50 PSCIs)

24 Managers | 2,268 PSCIs

**Latsco Marine Management Inc, GR**  
52 PSCIs | Top 20% | New Entry ★

**Naftomar Shipping & Trading Co, GR**  
79 PSCIs | Top 20% | 3Q

**Anglo-Eastern Shipmanagement, SG**  
231 PSCIs | Top 20% | 3Q

**Exmar Shipmanagement NV, BE**  
98 PSCIs | Top 20% | 3Q

**Eastern Pacific Shipping Pte, SG**  
83 PSCIs | Top 20% | 3Q

**Executive Ship Management Pte, SG**  
121 PSCIs | Top 30% | 3Q

**Bernhard Schulte, SG**  
56 PSCIs | Top 30% | 3Q

**Navigator Gas Ship Management, DK**  
109 PSCIs | Top 30% | 3Q

**BW Fleet Management AS, NO**  
60 PSCIs | Top 30% | New Entry ★

**Solvang ASA, NO**  
127 PSCIs | Top 30% | 2Q

### Benchmarking Dataset Breakdown

PSCI Pool	PSCI Range	Managers	PSCIs	PSCI %
Not Benchmarked	0 - 8 PSCIs	133	364	8.1%
Small PSCI Pool	9 - 19 PSCIs	59	743	16.5%
Medium PSCI Pool	20 - 49 PSCIs	35	1,135	25.2%
Large PSCI Pool	≥50 PSCIs	24	2,268	50.3%
		<b>251</b>	<b>4,510</b>	<b>100%</b>

### Notes on the Segment Benchmarking

**PSCIs:** Post State Control Inspections, for the specific segment and period

**Top xx%** corresponds to the PSC Performance Tier, see **Annex A**

**xQ** indicates number of **consecutive Quarters** in PSC Top 10

SCAN FOR METHODOLOGY





## Feeders (<10k DWT) (171 Managers, 1,547 PSCIs)

### Small PSCI Pool (6 - 9 PSCIs)

38 Managers | 301 PSCIs

**Tropical Shipping, US**  
10 PSCIs | Top 10% | 3Q

**Atlantic Shipping Co Ltd, BG**  
10 PSCIs | Top 20% | 3Q

**Neptune Pacific Line, NZ**  
10 PSCIs | Top 20% | New Entry ★

**Baltnautic Shipping Ltd, LT**  
9 PSCIs | Top 20% | 3Q

**Dandong Marine Shipping Co Ltd, CN**  
9 PSCIs | Top 20% | 3Q

**VSICO Shipping JSC, VN**  
9 PSCIs | Top 20% | 3Q

**AK Group Co Ltd, GR**  
7 PSCIs | Top 30% | New Entry ★

**Becker B Shipmanagement, DE**  
8 PSCIs | Top 30% | New Entry ★

**Skyline Int'l Shipping Co Ltd, HK**  
6 PSCIs | Top 30% | New Entry ★

**Eastaway Ship Mgmt Pte, SG**  
7 PSCIs | Top 30% | 2Q

### Medium PSCI Pool (10 - 19 PSCIs)

33 Managers | 470 PSCIs

**Marlow Ship Mgmt, DE**  
17 PSCIs | Top 20% | 3Q

**Pacific International Lines, SG**  
13 PSCIs | Top 20% | 3Q

**RCL Shipmanagement Pte Ltd, SG**  
11 PSCIs | Top 20% | 3Q

**Columbia Shipmanagement Ltd, CY**  
15 PSCIs | Top 20% | 3Q

**Hana Shipping Co Ltd, KR**  
19 PSCIs | Top 20% | 3Q

**Jebsen Shipping Partners Mgmt, DE**  
13 PSCIs | Top 20% | 3Q

**Synergy Marine Pte Ltd, SG**  
14 PSCIs | Top 30% | 2Q

**Kontor 17 MPM GmbH, DE**  
18 PSCIs | Top 30% | New Entry ★

**K&K Schiffahrts GmbH & Co KG, DE**  
11 PSCIs | Top 30% | 2Q

**Bien Dong Shipping Co Ltd, VN**  
16 PSCIs | Top 30% | 3Q

### Large PSCI Pool (≥20 PSCIs)

19 Managers | 552 PSCIs

**Baltnautic Shipmanagement Ltd, LT**  
24 PSCIs | Top 20% | 3Q

**Hyde Shipping Corp, US**  
25 PSCIs | Top 20% | 3Q

**JR Ship Management BV, NL**  
33 PSCIs | Top 20% | 3Q

**Holwerda Shipmanagement BV, NL**  
23 PSCIs | Top 20% | 3Q

**Fonway Shipping Pte Ltd, SG**  
22 PSCIs | Top 20% | 3Q

**Kotoku Kaiun Co Ltd, JP**  
35 PSCIs | Top 30% | 3Q

**Okyanus Ege Denizcilik Ticaret, TR**  
26 PSCIs | Top 30% | 3Q

**Mediterranean Line Inc, EG**  
31 PSCIs | Top 30% | 2Q

**Columbia Shipmgmt, SG**  
31 PSCIs | Top 40% | 3Q

**Peter Doehle Schiffahrts-KG, DE**  
28 PSCIs | Top 40% | 2Q

### Benchmarking Dataset Breakdown

PSCI Pool	PSCI Range	Managers	PSCIs	PSCI %
Not Benchmarked	0 - 5 PSCIs	81	224	14.5%
Small PSCI Pool	6 - 9 PSCIs	38	301	19.5%
Medium PSCI Pool	10 - 19 PSCIs	33	470	30.4%
Large PSCI Pool	≥20 PSCIs	19	552	35.7%
		<b>171</b>	<b>1,547</b>	<b>100%</b>

### Notes on the Segment Benchmarking

**PSCIs:** Post State Control Inspections, for the specific segment and period

**Top xx%** corresponds to the PSC Performance Tier, see **Annex A**

**xQ** indicates number of **consecutive Quarters** in PSC Top 10

SCAN FOR METHODOLOGY





## Large Containers (10-90k DWT) (475 Managers, 22,729 PSCIs)

### Small PSCI Pool (14 - 35 PSCIs)

100 Managers | 2,245 PSCIs

**Tropical Shipping, US**  
22 PSCIs | Top 10% | 3Q

**Okee Shipmanagement Gmbh & Co, DE**  
22 PSCIs | Top 20% | 2Q

**Synergy Oceanic Services, IN**  
24 PSCIs | Top 20% | 3Q

**Qingdao Hongshun Shipping Mgmt, CN**  
14 PSCIs | Top 20% | 3Q

**Dandong Marine Shipping Co Ltd, CN**  
15 PSCIs | Top 20% | 3Q

**Kasif Gemi Isletmeciligi AS, TR**  
20 PSCIs | Top 20% | New Entry ★

**Navilands Shanghai Container, CN**  
16 PSCIs | Top 20% | New Entry ★

**Caraka Tirta Perkasa Pt, ID**  
26 PSCIs | Top 20% | New Entry ★

**KMARIN Ocean Services Corp, KR**  
15 PSCIs | Top 20% | New Entry ★

**Marseille Fret SA, FR**  
26 PSCIs | Top 20% | New Entry ★

### Medium PSCI Pool (36 - 99 PSCIs)

76 Managers | 4,644 PSCIs

**Atlanship SA, CH**  
36 PSCIs | Top 20% | New Entry ★

**Wallem Shipmanagement, SG**  
41 PSCIs | Top 20% | 3Q

**Reefership Marine Services LLC, CR**  
58 PSCIs | Top 20% | 3Q

**Northstar Ship Management Ltd, HK**  
84 PSCIs | Top 20% | 3Q

**Quanzhou Ansheng Shpg Co Ltd, CN**  
38 PSCIs | Top 20% | 2Q

**Sinotrans Container Lines Co, CN**  
55 PSCIs | Top 20% | 3Q

**Ningbo Ocean Shipping Co Ltd, CN**  
42 PSCIs | Top 20% | 3Q

**Swire Shipping Pte Ltd, SG**  
99 PSCIs | Top 20% | 3Q

**SMTECH Ship Mgmt Co Ltd, KR**  
54 PSCIs | Top 20% | 2Q

**Norbulk Shipping Ltd, UK**  
57 PSCIs | Top 20% | New Entry ★

### Large PSCI Pool (≥100 PSCIs)

51 Managers | 14,436 PSCIs

**Marlow Navigation Co Ltd, CY**  
131 PSCIs | Top 20% | 3Q

**Arkas Denizcilik Ve Nakliyat, TR**  
270 PSCIs | Top 20% | 3Q

**Wan Hai Lines Pte, SG**  
209 PSCIs | Top 20% | 3Q

**Wan Hai Lines Ltd, TW**  
118 PSCIs | Top 20% | 3Q

**Shanghai Ocean Shipping Co Ltd, CN**  
353 PSCIs | Top 30% | 3Q

**KLC SM Co Ltd, KR**  
103 PSCIs | Top 30% | New Entry ★

**SITC Shipping Management, CN**  
348 PSCIs | Top 30% | New Entry ★

**Columbia Shipmanagement, SG**  
197 PSCIs | Top 30% | 3Q

**Anglo-Eastern Gmbh, DE**  
156 PSCIs | Top 30% | 3Q

**KMTC Ship Mgmt Co Ltd, KR**  
109 PSCIs | Top 30% | 3Q

### Benchmarking Dataset Breakdown

PSCI Pool	PSCI Range	Managers	PSCIs	PSCI %
Not Benchmarked	0 - 13 PSCIs	248	1,404	6.2%
Small PSCI Pool	14 - 35 PSCIs	100	2,245	9.9%
Medium PSCI Pool	36 - 99 PSCIs	76	4,644	20.4%
Large PSCI Pool	≥100 PSCIs	51	14,436	63.5%
		<b>475</b>	<b>22,729</b>	<b>100%</b>

### Notes on the Segment Benchmarking

**PSCIs:** Post State Control Inspections, for the specific segment and period

**Top xx%** corresponds to the PSC Performance Tier, see **Annex A**

**xQ** indicates number of **consecutive Quarters** in PSC Top 10

SCAN FOR METHODOLOGY



## Ultra Large Containers (>90k DWT) (74 Managers, 8,282 PSCIs)

### Small PSCI Pool (10 – 34 PSCIs)

20 Managers | 412 PSCIs

**Yang Ming Marine Transport, TW**  
20 PSCIs | Top 10% | 3Q

**Bernhard Schulte, IN**  
14 PSCIs | Top 20% | 3Q

**HL Crewmanagement Gmbh, DE**  
17 PSCIs | Top 20% | New Entry ★

**SMTECH Ship Management Co Ltd, KR**  
11 PSCIs | Top 20% | New Entry ★

**Wan Hai Lines Ltd, TW**  
11 PSCIs | Top 20% | 3Q

**United Arab Shipping Co Ltd, AE**  
28 PSCIs | Top 20% | New Entry ★

**Peter Doehle Schiffahrts-KG, DE**  
16 PSCIs | Top 30% | 3Q

**APL Maritime Ltd, US**  
11 PSCIs | Top 30% | 3Q

**G-Marine Service Co Ltd, KR**  
21 PSCIs | Top 30% | 3Q

**ASM Maritime BV, NL**  
21 PSCIs | Top 30% | New Entry ★

### Medium PSCI Pool (35 – 99 PSCIs)

16 Managers | 976 PSCIs

**K Line Ship Management Pte Ltd, SG**  
84 PSCIs | Top 20% | 3Q

**Wilhelmsen Ahrenkiel Bulk Gmbh, DE**  
50 PSCIs | Top 30% | New Entry ★

**MMS Bulkship Management, SG**  
53 PSCIs | Top 30% | 3Q

**RHL Reederei Hamburger Lloyd, DE**  
49 PSCIs | Top 30% | 3Q

**NYK Shipmanagement Pte Ltd, SG**  
72 PSCIs | Top 30% | 3Q

**Zodiac Maritime Ltd, UK**  
95 PSCIs | Top 30% | 3Q

**Bernhard Schulte, SG**  
55 PSCIs | Top 30% | 3Q

**Columbia Shipmanagement, SG**  
38 PSCIs | Top 30% | 2Q

**Bernhard Schulte, CN**  
58 PSCIs | Top 30% | 2Q

**V Ships Hamburg Gmbh & Co, DE**  
47 PSCIs | Top 30% | 3Q

### Large PSCI Pool (≥100 PSCIs)

20 Managers | 6,812 PSCIs

**Fleet Ship Management Pte Ltd, SG**  
151 PSCIs | Top 30% | 3Q

**Orient Overseas Container Line, HK**  
203 PSCIs | Top 30% | 3Q

**Seaspan Ship Management Ltd, CA**  
504 PSCIs | Top 30% | 3Q

**CPO Containerschiffreederei, DE**  
192 PSCIs | Top 30% | 3Q

**Shanghai Ocean Shipping Co Ltd, CN**  
450 PSCIs | Top 30% | 3Q

**CMA Ships SAS, FR**  
470 PSCIs | Top 40% | 3Q

**Hapag-Lloyd AG, DE**  
183 PSCIs | Top 40% | 3Q

**Anglo-Eastern Ship Mgmt, HK**  
116 PSCIs | Top 40% | 3Q

**CMA CGM Int'l Shipping, SG**  
357 PSCIs | Top 40% | 3Q

**Maersk A/S, DK**  
829 PSCIs | Top 40% | 2Q

### Benchmarking Dataset Breakdown

PSCI Pool	PSCI Range	Managers	PSCIs	PSCI %
Not Benchmarked	0 – 9 PSCIs	18	82	1.0%
Small PSCI Pool	10 – 34 PSCIs	20	412	5.0%
Medium PSCI Pool	35 – 99 PSCIs	16	976	11.8%
Large PSCI Pool	≥100 PSCIs	20	6,812	82.3%
		<b>74</b>	<b>8,282</b>	<b>100%</b>

### Notes on the Segment Benchmarking

**PSCIs:** Post State Control Inspections, for the specific segment and period

**Top xx%** corresponds to the PSC Performance Tier, see **Annex A**

**xQ** indicates number of **consecutive Quarters** in PSC Top 10

SCAN FOR METHODOLOGY



## 1. Objectives of a PSC Benchmarking Methodology

To develop a fair Benchmarking system, you need to make sure you compare apples to apples and oranges with oranges, and when it comes to shipping with respect to PSC, this means comparing ships of the:

- Same Type (e.g. Bulkers with Bulkers)
- Same Fleet Segment (DWT Wise)
- Same Year of Built (YoB), same age group
- Same PSC performance on Same Port

We have applied these principles consistently, throughout the RISK4SEA platform, to make sure everyone is treated fairly.

## 2. Identify PSC Data used for Benchmarking

RISK4SEA is using a team of analysts and third-party vendors and experts to collect, evaluate and validate data used in the platform. As a raw input the model uses PSC Data (Inspections and Detentions along with the accompanying details of each inspection) that are assigned to Port, Country, Manager, Class, Flag at the time of the Inspection, for each PSC inspection. Here the following PSC data parameters have been accounted for **Ocean going Performance, all ports, Countries, MoUs**, etc.

## 3. Set the Ship Types to be used for Benchmarking & Split Global Fleet into Segments

Benchmarking cannot proceed unless we split the global fleet into segments, and RISK4SEA platform uses the following parameters:

1. Bulker – Handysize (<35k DWT)
2. Bulker – Handymax (35-50k DWT)
3. Bulker – Supramax (50-67k DWT)
4. Bulker – Panamax (67-100k DWT)
5. Bulker – Cape (>100k DWT)
6. **Bundle: All dry bulk (Segments 1, 2, 3, 4,5)**
7. General Cargo

8. Tanker – Small Product (<25k DWT)
9. Tanker – MR1/MR2 (25 – 60k DWT)
10. Tanker – LR1/LR2 (60-125k DWT)
11. Tanker – Suezmax (125-200k DWT)
12. Tanker – VLCC (>200k DWT)
13. **Bundle: All tankers (Segments 8,9,10,11,12)**
14. LNG/Gas Carriers
15. LPG Carrier
16. Container – Feeders (<10k DWT)
17. Container – Large (10-90k DWT)
18. Container – Ultra Large (>90k DWT)
19. **Bundle: All containers (Segments 16, 17, 18)**
20. Vehicle Carrier
21. Ro Pax
22. Offshore
23. Other Ship Type
24. **Bundle: All ships (All above segments)**

## 4. Set the Age groups to be used for Benchmarking

In depth analysis has indicated that all and any KPIs that may be used for PSC performance Benchmarking are sensitive to age, therefore to set the comparison straight one crucial step is to set either the exact age and/or age groups to avoid comparing new ships with old ships and so on. The platform may use both approaches using the following five (5) age groups:

- 0-5 Years of age
- 6 to 10 Years of age
- 11-15 Years of age
- 16-20 Years of age
- Older than 20 Years of age

SCAN FOR METHODOLOGY



## 5. Set the Time Intervals for Benchmarking

A limited number of data and therefore PSCIs makes any comparison irrelevant due to insufficient data pools and therefore the following data have been accounted for in this benchmark:

- **Last 36 Calendar Months at the date of issue**, as identified at the bottom of the report

## 6. Set the KPIs to be used for Benchmarking

Arriving to the final stage before the final calculation for the performance analytics the most critical is to define the Key Performance Indicators (KPI) that the model will be using. Here the following KPIs are being used:

### DPI: Deficiency per Inspection (Value, Number)

**Definition:** Average number of deficiencies per inspection

**Performance:** The smaller figure indicates better PSC performance

### DER: Detention Rate (%)

**Definition:** Percentage of detentions per 100 inspections

**Performance:** The smaller figure indicates better performance

## 7. Benchmarking Performance Calculation

To benchmark against a value, you need to clearly identify the methodology and the benchmarks on how the values have been set and processed, with the following approach applied here:

### 7.1 KPI Benchmarking Performance Calculation: Making sure what we count makes sense

Benchmarking is about accounting for deviations from the assigned benchmark on two (2) parameters mainly

- The Deficiency per Inspection (DPI), i.e. Number of Deficiencies / Number of Inspections for a given period

- The Detention Rate (DER), i.e. Number of Detentions / Number of Inspections x 100 for a given period

Each entity is benchmarked for each respective KPI against a set Benchmarked as follows:

- Each **ship** is benchmarked against the average of other ships of similar type and age group at the same port
- Each **manager** is benchmarked against the average of other managers on the basis of the fleet they manage for the period under review

For every Ship there is a benchmark that is provided by the AVERAGE performance of the same ship YoB, Fleet Segment and Port that is calculated for a given period, as per the worked example provided below. For every Manager there is a benchmark that is provided by the SUM of the fleets of the same Group that they operate as calculated for a given period, as per the worked example provided below.

The Deviation is the % of the deviation of actual performance vs the Benchmark (which is the average) x 100

**KPI (Benchmarking Performance) (%) =**

$$[ \text{KPI (value)} - \text{KPI (benchmark)} ] / [ \text{KPI (benchmark)} ]$$

In case KPI Benchmarks are set the same may be calculated for set of Ships, e.g. fleet and managers, on the following basis:

**KPI (Benchmark Value) =**

Average [ KPI(of type A1 & age group A1), KPI (of type B2 & age group B2), KPI(of type C3 & age group C3)

SCAN FOR METHODOLOGY





At any given time to set an Overall Benchmarking Performance (BP) score anyone may do so by simply averaging all the factors used as each KPI is benchmarked against a set corresponding benchmark.

## 7.2 Worked Example on Ship Benchmarking Performance Calculation

For demonstration purposes the of Ship#1 is used, on the Cape Fleet Segment, with YoB: 2012, corresponding to the 10-14 age group. This is the actual performance of the ship for the period under investigation:

PSCI #	PSC Ship Inspection Portfolio				Port Specific Values		
	Port	MoU	#DEFs	#DET	DPI-B	DER-B	PSCIs
1	Port A	Paris	3	0	4,12	6,23%	95
2	Port B	Paris	2	0	3,93	4,14%	78
3	Port C	Tokyo	4	0	5,23	3,12%	48
4	Port D	USCG	7	1	8,76	8,45%	39
5	Port E	USCG	3	0	2,16	2,15%	124
6	Port F	Med	1	0	1,16	6,12%	62
<b>Average</b>			<b>3.33</b>	<b>16.67%</b>	<b>3.66</b>	<b>4.57%</b>	<b>446</b>
<b>Benchmarking Performance</b>					<b>-8.8%</b>	<b>264.4%</b>	<b>127.8%</b>

Where

**#DEFs:** Number of deficiencies

**#DET:** Number of Detentions (either 0 or 1 on each port)

**DPI:** Deficiency Per Inspection KPI

**DER:** Detention Rate KPI, per 100 inspections (%)

**Port Benchmarks** are for same Port, Fleet Segment (cape) & Age (YOB=2012)

**DPI-B:** Deficiency Per Inspection (DPI) - Benchmark (same port, fleet segment, age group, L36M at the date of PSCI)

**DER-B:** Detention Rate (DER) - Benchmark (same port, fleet segment, age group, L36M at the date of PSCI)

**SCORE:** Ship/Manager Combined Risk Evaluation as average of DPI-PER & DER-PER giving an overall assessment (Best=-100%, >0 is above Benchmark Average)

**Benchmarking Performance:** The deviation from the Actual Performance from the Benchmark

**Ship/Fleet Benchmarking Performance:** The average of both DPI and DER Benchmarking Performance

Calculation for the above example:

**DPI-B:**  $(3.33 - 3.66)/3.66 \times 100\% = -8.8\%$

**DER-B:**  $(16.67 - 4.57)/4.57 \times 100\% = +264.4\%$

**Overall Benchmark Performance** for the **Period** as the average Benchmark of DPI/DER:  $SCORE = (-8.8 + 264.4) / 2 = +127.8\%$

## 7.3 Worked Example on Manager/Fleet Benchmarking Performance Calculation

For demonstration purposes a fleet of 6 ships is calculated, including the Ship#1 of the above calculation, with each ship gone through the process of Ship Benchmarking Performance Calculation (as per above), Therefore this is the actual performance of the fleet for the period under investigation:

Ship #	PSC FLEET Inspection Portfolio				Ship Benchmarks on PSCIs			Ship SCORE
	Ship	Segment	DPI	DER	DPI	DER	PSCIs	
1	Ship #1	Cape	3.33	16.67%	3.66	4.57%	446	127.8%
2	Ship #2	Cape	1.14	0.00%	2.50	3.30%	385	-77.2%
3	Ship #3	Cape	1.60	0.00%	2.50	3.30%	195	-68.0%
4	Ship #4	Cape	1.00	0.00%	2.50	3.30%	658	-80.0%
5	Ship #5	Cape	1.20	0.00%	2.50	3.30%	1,562	-76.0%
6	Ship #6	Cape	4.00	12.00%	5.00	7.00%	895	25.7%
<b>Average</b>			<b>2.05</b>	<b>4.78%</b>	<b>3.17</b>	<b>4.23%</b>	<b>4,141</b>	<b>-11.3%</b>

The Abbreviations and the notes used in the Ship Worked example apply here as well.

On the above example the benchmarking performance of the fleet is -11.3%

SCAN FOR METHODOLOGY



## 7.4 Performance Tiers

To make sure that all reports contain the same level of reliability a scale has been used across the full spectrum of the RISK4SEA platform to convert the actual benchmarking Performance of the ships and Managers to the actual Performance Tier. For the purposes of this report the following scale has been applied:

Performance Tier	Benchmarking Performance	
	Min	Max
Top 10%	-100%	-95%
Top 20%	-95%	-70%
Top 30%	-70%	-40%
Top 40%	-40%	-10%
Average 50%	-10%	10%
Bottom 40%	10%	40%
Bottom 30%	40%	70%
Bottom 20%	70%	100%
Bottom 10%	100%	10,000%

## 8. Clarifications

### 8.1 Managers Benchmarked and Minimum PSCI Limit to be included in the Benchmarking Pools

Research has indicated that normally when we plot a manager/PSCI plot the median number of PSCIs per manager (i.e. the Number of PSCIs corresponding to approximately the half of the managers) should be the limit to exclude those who do NOT meet this criterion. Normally this pool of PSCIs is in the range of 10-20% of the total Segment PSCIs for the period under review.

This is why we provide the full benchmarking Dataset Breakdown on each of the Top Performers Segment:

Benchmarking Dataset Breakdown				
PSCI Pool	PSCI Range	Managers	PSCIs	PSCI %
Not Benchmarked	0 - 9 PSCIs	1,034	4,625	11.6%
Small PSCI Pool	10 - 24 PSCIs	586	9,041	22.6%
Medium PSCI Pool	25 - 49 PSCIs	299	10,395	26.0%
Large PSCI Pool	≥50 PSCIs	157	15,920	39.8%
		<b>2,076</b>	<b>39,981</b>	<b>100%</b>

### 8.2 Missing PSCIs

The case of a missing PSCIs may be a case (especially zero deficiency PSCIs from west Africa ports not officially reported to the port or the national Authority or International to any MoU or other party which it does NOT affect the actual results presented here in this report for the following reasons

1. These Reports (if any) have NOT been reported to anywhere else than the ship and therefore cannot be verified or inserted into the platform unless provided by the Manager of the ship.
2. We have reasons to believe that the phenomenon may be more or less of the same limited extend and that may be applicable to other managers as well.
3. Given the methodology uses the addition of an additional PSCI (with the exception of a Detention) will NOT alter the benchmarking performance of a fleet that, has to do with the sum of PSCIs from many ships, as per the examples presented above.
4. The basis of the benchmarking is to have and apply a set of rules and criteria to be used equally across the full spectrum of the data under review and this is wat we have done in this report.

### FURTHER INFO

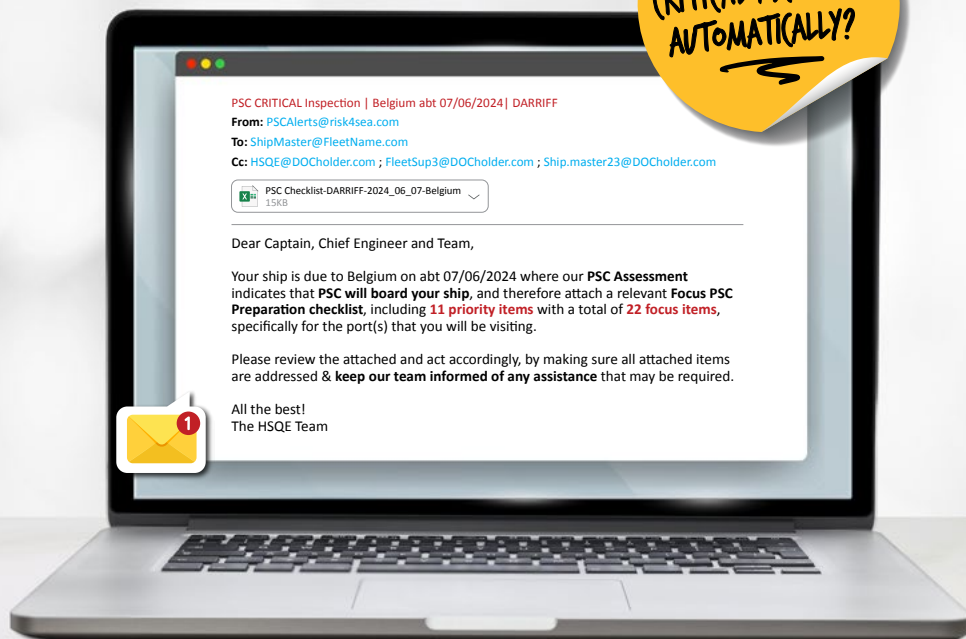
Should you be interested to learn more please visit [www.risk4sea.com](http://www.risk4sea.com)

SCAN FOR METHODOLOGY



# RISK4SEA

CAN YOU IDENTIFY  
CRITICAL PSC CALLS?  
AUTOMATICALLY?



Automation License will



**95%** PSC Inspection  
Guess Rate



**20-35**  
Checklist  
Focus Items



**80-95%** 

Port Findings Coverage

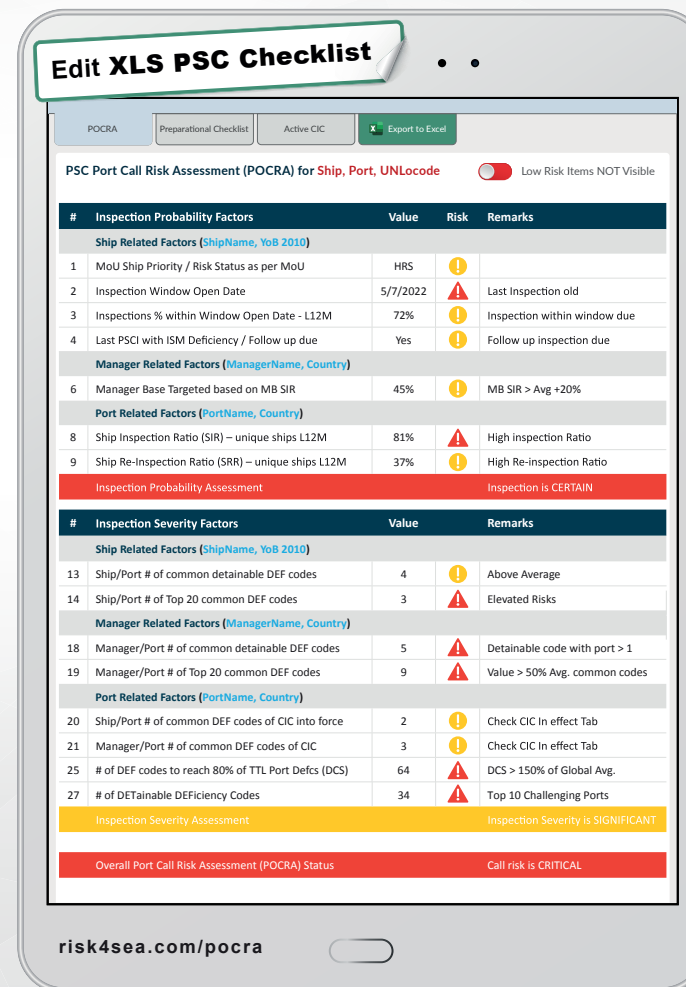
**10x** Minimize OPEX



[www.risk4sea.com/automation](http://www.risk4sea.com/automation)

## Illuminating PSC Performance

Introducing **1-click Ship, Manager & Port Specific POCRA**



[www.risk4sea.com/pocra](http://www.risk4sea.com/pocra)

Client List ▼

**RISK4SEA** is a SaaS PSC Intelligence platform, illuminating PSC performance to Prepare/Assess PSC inspections, Benchmark against competition and Automate PSC functions and alerts to eliminate detentions and minimize OPEX. Explore more at [www.risk4sea.com](http://www.risk4sea.com)

