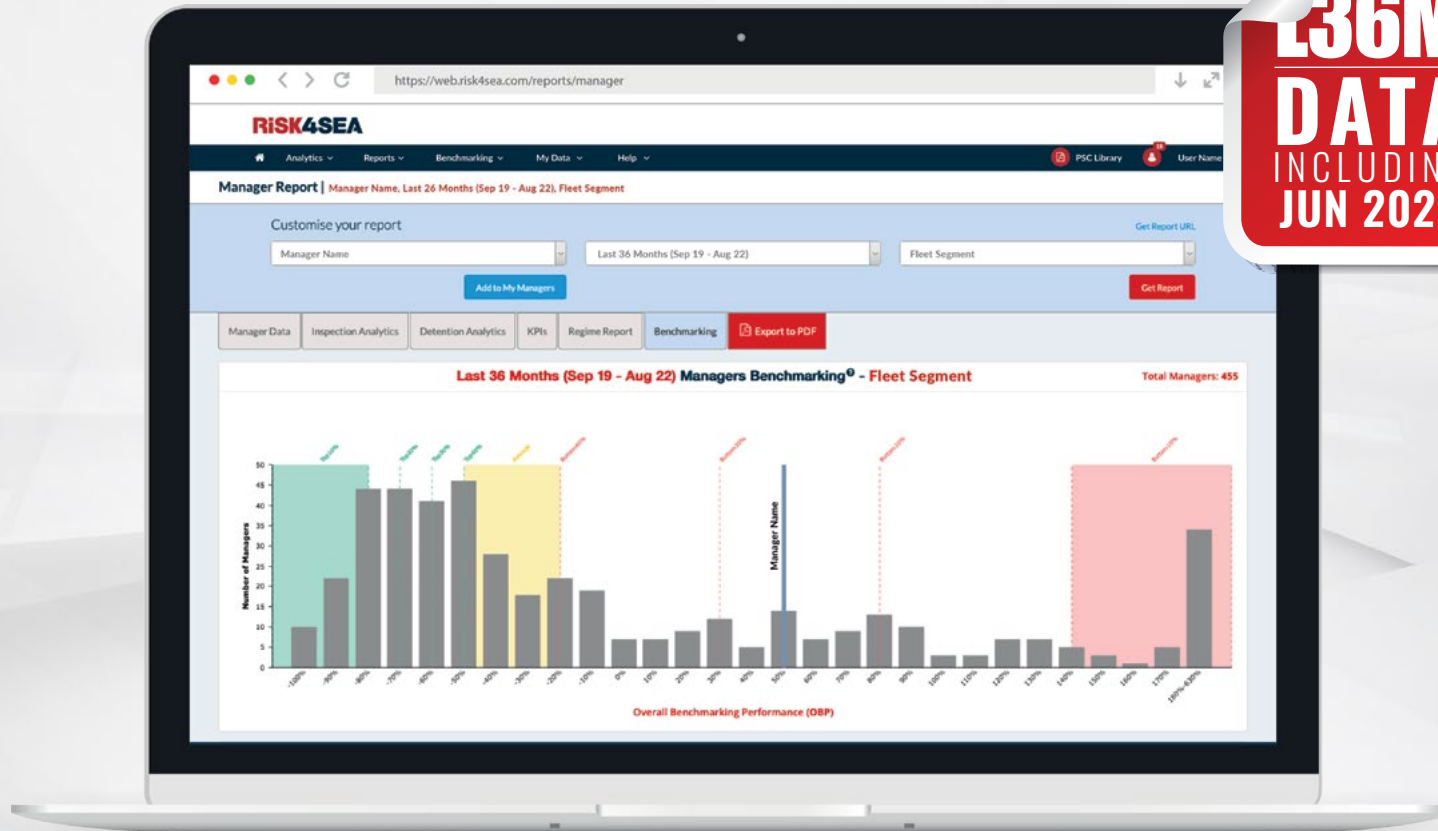


RiSK4SEA

Top PSC Performers

July 2025

36M
DATA
INCLUDING
JUN 2025



► Dry Bulk ► General Cargo ► Tankers ► LNG ► LPG ► Containers



Apo Belokas
Founder & CEO

RISK4SEA is a **SaaS PSC Intelligence** platform, **illuminating PSC performance** to **Prepare/Assess** PSC inspections, **Benchmark** against competition and **Automate PSC** functions & alerts to **eliminate detentions** and **minimize OPEX**.

At RISK4SEA, we are dedicated to providing actionable PSC intelligence to illuminate Port State Control (PSC) performance and support the journey toward sustainable shipping.

With a focus on embracing excellence, we are thrilled to announce the 4th edition of the **Top PSC Performers**, alongside the latest issue of our initiative called “**PSC Resilient 50**” that highlights the Top 50 Managers in terms of PSCIs without any detention. Both of which provide transparent access to the documentary evidence and in-depth research underpinning our findings.

We have meticulously mapped the entire PSC ecosystem—including PSC stations, ships, managers, and PSC inspections (PSCIs)—and finalized a robust benchmarking methodology, designed to be practical, accurate, and verifiable, ensuring it is both meaningful and applicable in real-world scenarios, incorporating geotagged PSCI data for the specific ship type, fleet segment, and age group.

We are excited to introduce this initiative, aiming to make PSC intelligence accessible to a broader segment of the market with the goal to update and circulate these rankings quarterly, covering the last 36 months of data.

By doing so, we aspire to illuminate PSC performance and promote Safety excellence, while also recognizing smaller players who often excel but may not receive the same spotlight as industry giants.

Contents

Bulkers

2. Handysize (<35k DWT)
3. Handymax (35-50k DWT)
4. Supramax (50-67k DWT)
5. Panamax (67-100k DWT)
6. Cape (>100k DWT)

7. General Cargo

Tankers

8. Small Product (<25k DWT)
9. MR1/MR2 (25 – 60k DWT)
10. LR1/LR2 (60-125k DWT)
11. Suezmax (125-200k DWT)
12. VLCC (>200k DWT)

13. LNG/Gas Carriers

14. LPG Carrier

Containers

15. Feeders (<10k DWT)
16. Large (10-90k DWT)
17. Ultra Large (>90k DWT)

18. Annex A

Handysize (<35k DWT) (939 Managers, 15,905 PSCIs)

Small PSCI Pool (10 - 24 PSCIs)

327 Managers | 4,960 PSCIs

Polembros Bulkers Inc, GR
15 PSCIs | Top 10%

Empremar SA, CL
12 PSCIs | Top 10%

Humboldt Administradora, CL
10 PSCIs | Top 10%

CSL Group Inc, CA
14 PSCIs | Top 20%

Golden Arrow Maritime Co SA, GR
18 PSCIs | Top 20%

M/Maritime Corp, GR
21 PSCIs | Top 20%

AM Nomikos Transworld Maritime, GR
17 PSCIs | Top 20%

Goldenport Shipmgmt Ltd, GR
16 PSCIs | Top 20%

China Steel Express Corp, GR
23 PSCIs | Top 20%

Technical Marine Planning, GR
20 PSCIs | Top 20%

Medium PSCI Pool (25 - 49 PSCIs)

102 Managers | 3,598 PSCIs

Cosco Shipping Bulk Co Ltd, CN
45 PSCIs | Top 20%

Adakent Gemi Isletmeciligi, TR
33 PSCIs | Top 20%

Newport SA, GR
37 PSCIs | Top 20%

Sunship Schiffahrtskontor KG, DE
33 PSCIs | Top 20%

Shanghai Anrita Shpg Co Ltd, CN
49 PSCIs | Top 20%

Roks Maritime Inc, GR
29 PSCIs | Top 20%

Armador Gemi Isletmeciligi, TR
29 PSCIs | Top 20%

Yangtze Navigation Co Ltd, CN
47 PSCIs | Top 20%

SMT Cement Sp Z OO, PL
30 PSCIs | Top 20%

Lidmar Shipping & Trading Co, GR
28 PSCIs | Top 20%

Large PSCI Pool (≥50 PSCIs)

60 Managers | 5,338 PSCIs

Anglo-Eastern Ship Management, CN
227 PSCIs | Top 20%

H&J Marine Inc, JP
58 PSCIs | Top 20%

Alma Shipmgmt & Trading, GR
78 PSCIs | Top 20%

Fortius Ship Management Ltd, GR
60 PSCIs | Top 20%

Cosco Shipping Specialized, CN
62 PSCIs | Top 20%

First Marine Service Co Ltd, JP
50 PSCIs | Top 20%

V Ships Greece Ltd, GR
63 PSCIs | Top 30%

Alloceans Shipping Co Ltd, GR
120 PSCIs | Top 30%

Nj Trust Marine Ltd, GR
51 PSCIs | Top 30%

Pacific Basin Shipping Ltd, CN
350 PSCIs | Top 30%

Benchmarking Dataset Breakdown

PSCI Pool	PSCI Range	Managers	PSCIs	PSCI %
Not Benchmarked	0 - 9 PSCIs	450	2,009	12.6%
Small PSCI Pool	10 - 24 PSCIs	327	4,960	31.2%
Medium PSCI Pool	25 - 49 PSCIs	102	3,598	22.6%
Large PSCI Pool	≥50 PSCIs	60	5,338	33.6%
		939	15,905	100%

Notes on the Segment Benchmarking

PSCIs: Post State Control Inspections, for the specific segment and period
Top xx% corresponds to the PSC Performance Tier, see **Annex A**

SCAN FOR METHODOLOGY



Handymax (35–50k DWT) (573 Managers, 10,763 PSCIs)

Small PSCI Pool (10 – 24 PSCIs)

181 Managers | 2,791 PSCIs

Seastar Chartering Ltd, GR
16 PSCIs | Top 10%

Oskar Wehr KG Gmbh & Co, DE
12 PSCIs | Top 10%

Order Shipping Co Ltd, GR
12 PSCIs | Top 20%

Helikon Shipping Enterprises, UK
13 PSCIs | Top 20%

Maestro Ship Management Ltd, CY
11 PSCIs | Top 20%

Apex Ship Management Pte Ltd, SG
10 PSCIs | Top 20%

FCN Management Inc, GR
11 PSCIs | Top 20%

CSL Group Inc, CA
18 PSCIs | Top 20%

Stemship Management Ltd, LB
11 PSCIs | Top 20%

Montana Ship Management Inc, GR
13 PSCIs | Top 20%

Medium PSCI Pool (25 – 49 PSCIs)

65 Managers | 2,290 PSCIs

Total Shipmanagement Services, GR
25 PSCIs | Top 10%

Shenzhen Ocean Shipping Co Ltd, CN
28 PSCIs | Top 20%

Cosco Shipping Xiamen Co Ltd, CN
31 PSCIs | Top 20%

M/Maritime Corp, GR
44 PSCIs | Top 20%

Newport SA, GR
27 PSCIs | Top 20%

VG Shipmanagement SA, GR
28 PSCIs | Top 20%

Sejin Marine Co Ltd, KR
25 PSCIs | Top 20%

Intership Navigation Co, GR
49 PSCIs | Top 20%

Zhejiang Shipping Group Co Ltd, CN
41 PSCIs | Top 20%

Ocean Longevity Shipping, CN
35 PSCIs | Top 20%

Large PSCI Pool (≥50 PSCIs)

46 Managers | 4,383 PSCIs

Cosco Shipping Bulk Co Ltd, CN
142 PSCIs | Top 20%

Pacific Basin Shipping Ltd, CN
248 PSCIs | Top 20%

Ya-Sa Gemi Isletmeciligi, TR
68 PSCIs | Top 20%

MTM Ship Management Pvt, IN
87 PSCIs | Top 20%

Fleet Management Ltd, CN
192 PSCIs | Top 20%

Fusco Zhongping Ship Mgmt Co, CN
61 PSCIs | Top 30%

Marinsa Denizcilik AS, TR
54 PSCIs | Top 30%

Berge Bulk Maritime Pte Ltd, SG
59 PSCIs | Top 30%

Nordic Hamburg Shipmgmt Ltd, CN
52 PSCIs | Top 30%

Navigation Maritime Bulgare, BG
114 PSCIs | Top 30%

Benchmarking Dataset Breakdown

PSCI Pool	PSCI Range	Managers	PSCIs	PSCI %
Not Benchmarked	0 – 9 PSCIs	281	1,299	12.1%
Small PSCI Pool	10 – 24 PSCIs	181	2,791	25.9%
Medium PSCI Pool	25 – 49 PSCIs	65	2,290	21.3%
Large PSCI Pool	≥50 PSCIs	46	4,383	40.7%
		573	10,763	100%

Notes on the Segment Benchmarking

PSCIs: Post State Control Inspections, for the specific segment and period
Top xx% corresponds to the PSC Performance Tier, see **Annex A**

SCAN FOR METHODOLOGY



Supramax (50-67k DWT) (935 Managers, 26,230 PSCIs)

Small PSCI Pool (10 - 24 PSCIs)

285 Managers | 4,528 PSCIs

Jiangyin Lidian Coal Transport, CN
10 PSCIs | Top 10%

Kouros Maritime Enterprises, GR
11 PSCIs | Top 10%

Aegean Bulk Co Inc, GR
17 PSCIs | Top 10%

Vita Management SA, GR
12 PSCIs | Top 20%

Bulkship Management AS, NO
11 PSCIs | Top 20%

Gourdomichalis Maritime SA, GR
18 PSCIs | Top 20%

Konkar Shipping Agencies SA, GR
15 PSCIs | Top 20%

Ocean Longevity Shipping, CN
12 PSCIs | Top 20%

Novelty Shipmanagement SA, GR
17 PSCIs | Top 20%

Berge Bulk Maritime Pte Ltd, SG
21 PSCIs | Top 20%

Medium PSCI Pool (25 - 49 PSCIs)

170 Managers | 5,746 PSCIs

Shanghai CP Int Ship Mgmt, CN
28 PSCIs | Top 10%

Guangdong Yudean Shpg Co Ltd, CN
30 PSCIs | Top 10%

Century Bulk Carriers Mgmt Co, GR
30 PSCIs | Top 10%

Adnoc Logistics & Services, AE
41 PSCIs | Top 20%

Zhejiang Shipping Group Co Ltd, CN
25 PSCIs | Top 20%

Trust Bulkiers Ltd, GR
37 PSCIs | Top 20%

Zhejiang Shipping Co Ltd, CN
34 PSCIs | Top 20%

Jiangsu Ocean Shipping Bulk Co, CN
31 PSCIs | Top 20%

Astra Shipmanagement Inc, GR
38 PSCIs | Top 20%

Carras Hellas SA, GR
37 PSCIs | Top 20%

Large PSCI Pool (≥50 PSCIs)

130 Managers | 14,267 PSCIs

M/Maritime Corp, GR
62 PSCIs | Top 20%

Laskaridis Maritime SA, GR
74 PSCIs | Top 20%

Byzantine Maritime Corp, GR
71 PSCIs | Top 20%

Shenzhen Ocean Shipping Co Ltd, CN
114 PSCIs | Top 20%

Cosco Shipping Bulk Co Ltd, CN
426 PSCIs | Top 20%

Hong Kong Ming Wah, CN
148 PSCIs | Top 20%

Suisse-Atlantique, CH
52 PSCIs | Top 20%

Niovis Shipping Co SA, GR
142 PSCIs | Top 20%

Sealink Navigation Ltd, GR
54 PSCIs | Top 20%

Fleet Ship Mgmt Pte Ltd, SG
210 PSCIs | Top 20%

Benchmarking Dataset Breakdown

PSCI Pool	PSCI Range	Managers	PSCIs	PSCI %
Not Benchmarked	0 - 0 PSCIs	350	1,689	6.4%
Small PSCI Pool	10 - 24 PSCIs	285	4,528	17.3%
Medium PSCI Pool	25 - 49 PSCIs	170	5,746	21.9%
Large PSCI Pool	≥50 PSCIs	130	14,267	54.4%
		935	26,230	100%

Notes on the Segment Benchmarking

PSCIs: Post State Control Inspections, for the specific segment and period
Top xx% corresponds to the PSC Performance Tier, see **Annex A**

SCAN FOR METHODOLOGY



Panamax (67-100k DWT) (816 Managers, 18,934 PSCIs)

Small PSCI Pool (10 - 24 PSCIs)

218 Managers | 3,502 PSCIs

Seamar Management SA, GR
10 PSCIs | Top 10%

Taihang Shipping Co Ltd, CN
12 PSCIs | Top 10%

Third Millenium Shipping Ltd, GR
15 PSCIs | Top 10%

Formosa Plastics Marine Corp, TW
16 PSCIs | Top 20%

Viet Thuan Transport Co Ltd, VN
11 PSCIs | Top 20%

Alberta Shipmanagement Ltd, GR
11 PSCIs | Top 20%

Fundador Naviera, GR
17 PSCIs | Top 20%

Qinhuangdao Fanshun Shipping, CN
10 PSCIs | Top 20%

Oceanbulk Maritime SA, GR
10 PSCIs | Top 20%

Minerva Dry Inc, GR
11 PSCIs | Top 20%

Medium PSCI Pool (25 - 49 PSCIs)

139 Managers | 4,944 PSCIs

Bahri Ship Management DMCC, AE
36 PSCIs | Top 10%

Laskaridis Maritime SA, GR
32 PSCIs | Top 20%

V Ships LLC Boston, US
40 PSCIs | Top 20%

Tokei Kaiun KK, JP
34 PSCIs | Top 20%

Hong Kong Ming Wah, CN
40 PSCIs | Top 20%

Primerose Shipping Co Ltd, GR
34 PSCIs | Top 20%

Century Bulk Carriers Mgmt Co, GR
32 PSCIs | Top 20%

Raffles Bulk Shipmanagement, SG
26 PSCIs | Top 20%

E Nomikos Corp, GR
39 PSCIs | Top 20%

Astra Shipmanagement Inc, GR
33 PSCIs | Top 20%

Large PSCI Pool (≥50 PSCIs)

101 Managers | 8,840 PSCIs

Neda Maritime Agency Co Ltd, GR
55 PSCIs | Top 20%

Diana Shipping Services SA, GR
117 PSCIs | Top 20%

Shenzhen Ocean Shipping Co Ltd, CN
77 PSCIs | Top 20%

Safety Management Overseas, GR
52 PSCIs | Top 20%

Thenamaris Conbulk Inc, GR
65 PSCIs | Top 20%

Ocean Longevity Shipping, CN
53 PSCIs | Top 20%

Toyo Sangyo Co Ltd, JP
58 PSCIs | Top 20%

Grehel Shipmanagement Co, GR
96 PSCIs | Top 20%

Charterwell Maritime SA, GR
136 PSCIs | Top 20%

Blue Planet Shipping Ltd, GR
50 PSCIs | Top 20%

Benchmarking Dataset Breakdown

PSCI Pool	PSCI Range	Managers	PSCIs	PSCI %
Not Benchmarked	0 - 9 PSCIs	358	1,648	8.7%
Small PSCI Pool	10 - 24 PSCIs	218	3,502	18.5%
Medium PSCI Pool	25 - 49 PSCIs	139	4,944	26.1%
Large PSCI Pool	≥50 PSCIs	101	8,840	46.7%
		816	18,934	100%

Notes on the Segment Benchmarking

PSCIs: Post State Control Inspections, for the specific segment and period
Top xx% corresponds to the PSC Performance Tier, see **Annex A**

SCAN FOR METHODOLOGY



Cape (>100k DWT) (380 Managers, 8,336 PSCIs)

Small PSCI Pool (10 - 24 PSCIs)

86 Managers | 1,275 PSCIs

Century Bulk Carriers Mgmt Co, GR
23 PSCIs | Top 20%

Sincere Navigation Corp, TW
20 PSCIs | Top 20%

Yamamaru Kisen KK, JP
11 PSCIs | Top 20%

Active Denizcilik Ve Gemi, TR
10 PSCIs | Top 20%

Alberta Shipmanagement Ltd, GR
11 PSCIs | Top 20%

Empresa Naviera Elcano SA, ES
10 PSCIs | Top 20%

Osaka Fleet Co Ltd, JP
10 PSCIs | Top 20%

Seacon Ships Mgmt-Qingdao, CN
10 PSCIs | Top 20%

Hokoku Marine Co Ltd, JP
10 PSCIs | Top 20%

Charterwell Maritime SA, GR
24 PSCIs | Top 20%

Medium PSCI Pool (25 - 49 PSCIs)

55 Managers | 1,864 PSCIs

Shandong Fleet Management Ltd, CN
44 PSCIs | Top 20%

SDSC Ship Management Co Ltd, CN
38 PSCIs | Top 20%

Shoei Ship Management Pte Ltd, SG
30 PSCIs | Top 20%

V Ships Greece Ltd, GR
28 PSCIs | Top 20%

Tai Chong Cheang Steamship Co, CN
28 PSCIs | Top 20%

Safe Bulkers Management Ltd, CY
28 PSCIs | Top 30%

Diana Shipping Services SA, GR
47 PSCIs | Top 30%

FML Ship Management Ltd, CY
27 PSCIs | Top 30%

Brave Maritime Corp Inc, GR
29 PSCIs | Top 30%

Mitsubishi Ore Transport Co, JP
31 PSCIs | Top 30%

Large PSCI Pool (≥50 PSCIs)

51 Managers | 4,418 PSCIs

Hong Kong Ming Wah Shpg Co Ltd, CN
68 PSCIs | Top 20%

Hong Kong Ming Wah, CN
70 PSCIs | Top 20%

Maran Dry Management Inc, GR
185 PSCIs | Top 20%

Golden Top Shipping Co Ltd, CN
51 PSCIs | Top 20%

Fleet Ship Management Pte Ltd, SG
54 PSCIs | Top 20%

U-Ming Marine Xiamen Intl Ship, CN
51 PSCIs | Top 20%

Qilu Ship Management Co Ltd, CN
66 PSCIs | Top 30%

Qingdao Winning Intl Ships, CN
67 PSCIs | Top 30%

H-Line Shipping Co Ltd, KR
75 PSCIs | Top 30%

Seanergy Shipmgt Corp, GR
83 PSCIs | Top 30%

Benchmarking Dataset Breakdown

PSCI Pool	PSCI Range	Managers	PSCIs	PSCI %
Not Benchmarked	0 - 9 PSCIs	188	779	9.3%
Small PSCI Pool	10 - 24 PSCIs	86	1,275	15.3%
Medium PSCI Pool	25 - 49 PSCIs	55	1,864	22.4%
Large PSCI Pool	≥50 PSCIs	51	4,418	53.0%
		380	8,336	100%

Notes on the Segment Benchmarking

PSCIs: Post State Control Inspections, for the specific segment and period
Top xx% corresponds to the PSC Performance Tier, see **Annex A**

SCAN FOR METHODOLOGY



General Cargo (2,148 Managers, 41,632 PSCIs)

Small PSCI Pool (10 - 24 PSCIs)

617 Managers | 9,529 PSCIs

Glory-Pacific Shipping S Pte, SG
10 PSCIs | Top 10%

Swire Shipping Pte Ltd, SG
19 PSCIs | Top 10%

S-Bulkers Ltd, GR
13 PSCIs | Top 10%

Obe Ships Management Co LLC, AE
17 PSCIs | Top 10%

Filharmony Shipmgmt Inc, PH
18 PSCIs | Top 10%

Tropical Shipping, US
21 PSCIs | Top 20%

Yaka Gemi Isletmeciligi Sanayi, TR
11 PSCIs | Top 20%

Thor Dahl Shipmanagement SA, NO
11 PSCIs | Top 20%

YS Marine Co Ltd, JP
14 PSCIs | Top 20%

B&S Enterprise Co Ltd, JP
10 PSCIs | Top 20%

Medium PSCI Pool (25 - 49 PSCIs)

301 Managers | 10,500 PSCIs

OSM Maritime AS, NO
27 PSCIs | Top 10%

Team Fuel Corp, GR
34 PSCIs | Top 20%

Seaspire Maritime Inc, GR
27 PSCIs | Top 20%

Candler Schiffahrt GmbH, DE
49 PSCIs | Top 20%

Lizstar Singapore Pte Ltd, SG
49 PSCIs | Top 20%

Tianjin Shun Xin Yuan Shpg Co, CN
42 PSCIs | Top 20%

Island View Shipping Services, SG
46 PSCIs | Top 20%

Nova Ship Tech SA, CH
46 PSCIs | Top 20%

New Century Overseas Mgmt Inc, PH
26 PSCIs | Top 20%

Pioneer Marine Hellas SA, GR
26 PSCIs | Top 20%

Large PSCI Pool (≥50 PSCIs)

169 Managers | 16,710 PSCIs

Glory Navigation Co Ltd, TW
81 PSCIs | Top 10%

H&J Marine Inc, JP
82 PSCIs | Top 20%

Dalex Shipping Co SA, GR
62 PSCIs | Top 20%

Brave Maritime Corp Inc, GR
68 PSCIs | Top 20%

Tamar Ship Management Pte Ltd, GR
52 PSCIs | Top 20%

Cosco Shipping Specialized, CN
354 PSCIs | Top 20%

Intership Navigation Co, CY
165 PSCIs | Top 20%

PACC Ship Managers Pte Ltd, SG
96 PSCIs | Top 20%

Arklow Shipping ULC, IE
72 PSCIs | Top 20%

Toko Kaiun Kaisha Ltd, JP
85 PSCIs | Top 20%

Benchmarking Dataset Breakdown

PSCI Pool	PSCI Range	Managers	PSCIs	PSCI %
Not Benchmarked	0 - 9 PSCIs	1,061	4,893	11.8%
Small PSCI Pool	10 - 24 PSCIs	617	9,529	22.9%
Medium PSCI Pool	25 - 49 PSCIs	301	10,500	25.2%
Large PSCI Pool	≥50 PSCIs	169	16,710	40.1%
		2,148	41,632	100%

Notes on the Segment Benchmarking

PSCIs: Post State Control Inspections, for the specific segment and period
Top xx% corresponds to the PSC Performance Tier, see **Annex A**

SCAN FOR METHODOLOGY



Small Product (<25k DWT) (759 Managers, 12,523 PSCIs)

Small PSCI Pool (10 - 24 PSCIs)

166 Managers | 2,589 PSCIs

Dania Ship Management A/S, DK
19 PSCIs | Top 10%

ASP Ship Management, SG
17 PSCIs | Top 10%

Elbana Di Navigazione Spa, IT
10 PSCIs | Top 10%

Eastern Tanker Co Ltd, KR
11 PSCIs | Top 10%

Gold Bridge Shipping Ltd, CN
13 PSCIs | Top 20%

Bernhard Schulte Shipping, SG
12 PSCIs | Top 20%

Taihua Ship Management Ltd, CN
10 PSCIs | Top 20%

Khai Hoan Marine Corp, VN
10 PSCIs | Top 20%

Pan Ocean Shipping Shanghai, CN
17 PSCIs | Top 20%

Donsotank Rederi AB, SE
10 PSCIs | Top 20%

Medium PSCI Pool (25 - 49 PSCIs)

83 Managers | 2,792 PSCIs

Atlantas Ship Management Ltd, GR
26 PSCIs | Top 10%

Smart Tankers Inc, GR
26 PSCIs | Top 10%

Pritchard-Gordon Tankers Ltd, UK
35 PSCIs | Top 20%

VLK Traders S Pte Ltd, CN
39 PSCIs | Top 20%

Dongzhan Shipping Co Ltd, CN
38 PSCIs | Top 20%

Lotus Shipping Co Ltd, GR
30 PSCIs | Top 20%

Suntech Ship Management, NL
26 PSCIs | Top 20%

Tarbit Tankers Services BV, VN
28 PSCIs | Top 20%

Aulac Corp, TR
47 PSCIs | Top 20%

Beykar Denizcilik Gemi, TR
34 PSCIs | Top 20%

Large PSCI Pool (≥50 PSCIs)

61 Managers | 5,434 PSCIs

Pakoil Denizcilik Ticaret, TR
53 PSCIs | Top 20%

YMN Tanker Deniz Isletmeciligi, TR
56 PSCIs | Top 20%

Marin Ship Management, NL
55 PSCIs | Top 20%

Sansho Kaiun Co Ltd, JP
51 PSCIs | Top 20%

New Shipping Kaisha Ltd, JP
84 PSCIs | Top 20%

Stolt Tankers BV, NL
251 PSCIs | Top 20%

Christiania Ship Management, NL
83 PSCIs | Top 20%

Uni-Tankers, DK
78 PSCIs | Top 20%

Fantasea Ship Mgmt Pte, SG
99 PSCIs | Top 20%

Interunity Mgmt Corp SA, GR
50 PSCIs | Top 30%

Benchmarking Dataset Breakdown

PSCI Pool	PSCI Range	Managers	PSCIs	PSCI %
Not Benchmarked	0 - 9 PSCIs	449	1,708	13.6%
Small PSCI Pool	10 - 24 PSCIs	166	2,589	20.7%
Medium PSCI Pool	25 - 49 PSCIs	83	2,792	22.3%
Large PSCI Pool	≥50 PSCIs	61	5,434	43.4%
		759	12,523	100%

Notes on the Segment Benchmarking

PSCIs: Post State Control Inspections, for the specific segment and period
Top xx% corresponds to the PSC Performance Tier, see **Annex A**

SCAN FOR METHODOLOGY



MR1/MR2 (25 – 60k DWT) (555 Managers, 14,604 PSCIs)

Small PSCI Pool (10 – 24 PSCIs)

92 Managers | 1,434 PSCIs

Pleiades Shipping Agents SA, GR
10 PSCIs | Top 10%

Grace Management SA, GR
12 PSCIs | Top 10%

Ionia Management SA, GR
12 PSCIs | Top 10%

Interorient Marine Services, CY
11 PSCIs | Top 20%

Valles Steamship Inc, CA
19 PSCIs | Top 20%

Sao Viet Petrol Transportation, VN
10 PSCIs | Top 20%

Vosco, VN
24 PSCIs | Top 20%

Tsakos Conbulk Services TCB, GR
23 PSCIs | Top 20%

Thunder Shipmgmt LLC-FZ, AE
11 PSCIs | Top 20%

Novella O, IT
11 PSCIs | Top 20%

Medium PSCI Pool (25 – 49 PSCIs)

60 Managers | 2,065 PSCIs

Tsakos Shipping & Trading SA, GR
27 PSCIs | Top 10%

Capital Ship Management Corp, GR
34 PSCIs | Top 20%

D'Amico Ship Management SRL, IT
46 PSCIs | Top 20%

Sun Enterprises Ltd, GR
25 PSCIs | Top 20%

Empire Navigation Inc, GR
49 PSCIs | Top 20%

Norbulk Shipping Ltd, UK
29 PSCIs | Top 20%

V Ships Germany GmbH, DE
25 PSCIs | Top 20%

Zodiac Maritime Ltd, UK
30 PSCIs | Top 20%

Eletson Corp, GR
37 PSCIs | Top 20%

Tsakos Columbia Shipmgmt SA, GR
27 PSCIs | Top 20%

Large PSCI Pool (≥50 PSCIs)

74 Managers | 9,851 PSCIs

D'Amico Societa Di Navigazione, IT
63 PSCIs | Top 20%

Avin International Ltd, GR
66 PSCIs | Top 20%

Tankerska Plovidba DD, HR
50 PSCIs | Top 20%

Latsco Marine Management Inc, GR
54 PSCIs | Top 20%

Histria Shipmanagement SRL, RO
59 PSCIs | Top 20%

LSC SIA, LV
117 PSCIs | Top 20%

Eastern Mediterranean Mtme, GR
135 PSCIs | Top 20%

Cosco Shipping Energy Trans, CN
88 PSCIs | Top 20%

MTM Ship Management Pte Ltd, SG
116 PSCIs | Top 20%

MMS Co Ltd, JP
135 PSCIs | Top 20%

Benchmarking Dataset Breakdown

PSCI Pool	PSCI Range	Managers	PSCIs	PSCI %
Not Benchmarked	0 – 9 PSCIs	329	1,254	8.6%
Small PSCI Pool	10 – 24 PSCIs	92	1,434	9.8%
Medium PSCI Pool	25 – 49 PSCIs	60	2,065	14.1%
Large PSCI Pool	≥50 PSCIs	74	9,851	67.5%
		555	14,604	100%

Notes on the Segment Benchmarking

PSCIs: Post State Control Inspections, for the specific segment and period
Top xx% corresponds to the PSC Performance Tier, see **Annex A**

SCAN FOR METHODOLOGY



LR1/LR2 (60-125k DWT) (442 Managers, 5,815 PSCIs)

Small PSCI Pool (10 - 24 PSCIs)

63 Managers | 998 PSCIs

Enterprises Shipping & Trading, GR
17 PSCIs | Top 10%

Tai Chong Cheang Steamship, CN
15 PSCIs | Top 20%

Donnelly Tanker Management, CY
12 PSCIs | Top 20%

Transpetrol TM AS, NO
11 PSCIs | Top 20%

Arcadia Shipmanagement Co Ltd, GR
18 PSCIs | Top 20%

MOL Tankship Management Pte, SG
12 PSCIs | Top 20%

Bernhard Schulte Shipmgmt, GR
16 PSCIs | Top 20%

Optimum Ship Services Ltd, GR
15 PSCIs | Top 20%

Chandris Hellas Inc, GR
19 PSCIs | Top 20%

Associated Maritime Co Ltd, CN
23 PSCIs | Top 20%

Medium PSCI Pool (25 - 49 PSCIs)

42 Managers | 1,460 PSCIs

Tsakos Columbia Shipmgmt SA, GR
35 PSCIs | Top 20%

Samos Steamship Co GR
41 PSCIs | Top 20%

Pleiades Shipping Agents SA, GR
36 PSCIs | Top 20%

Ionic Tankers Mgt Inc, GR
35 PSCIs | Top 20%

Wallem Shipmanagement Ltd, CN
38 PSCIs | Top 20%

Paradise Navigation SA, GR
26 PSCIs | Top 20%

Sun Enterprises Ltd, GR
29 PSCIs | Top 20%

OSM Bergen Tank AS, NO
31 PSCIs | Top 20%

Reederei Nord BV, NL
43 PSCIs | Top 20%

Sun Ship Management, AE
30 PSCIs | Top 20%

Large PSCI Pool (≥50 PSCIs)

26 Managers | 2,470 PSCIs

MISC Shipmanagement S Pte, SG
78 PSCIs | Top 10%

Teekay Marine, SG
83 PSCIs | Top 20%

Tsakos Shipping & Trading SA, GR
130 PSCIs | Top 20%

Columbia Shipmanagement, DE
147 PSCIs | Top 20%

Navios Tankers Management Inc, GR
55 PSCIs | Top 20%

Thenamaris Ships Management, GR
118 PSCIs | Top 20%

Zodiac Maritime Ltd, UK
65 PSCIs | Top 20%

International Tanker Mngmt Ltd, AE
57 PSCIs | Top 20%

Minerva Marine Inc, GR
141 PSCIs | Top 30%

TORM A/S, DK
101 PSCIs | Top 30%

Benchmarking Dataset Breakdown

PSCI Pool	PSCI Range	Managers	PSCIs	PSCI %
Not Benchmarked	0 - 9 PSCIs	311	887	15.3%
Small PSCI Pool	10 - 24 PSCIs	63	998	17.2%
Medium PSCI Pool	25 - 49 PSCIs	42	1,460	25.1%
Large PSCI Pool	≥50 PSCIs	26	2,470	42.5%
		442	5,815	100%

Notes on the Segment Benchmarking

PSCIs: Post State Control Inspections, for the specific segment and period
Top xx% corresponds to the PSC Performance Tier, see **Annex A**

SCAN FOR METHODOLOGY



Suezmax (125-200k DWT) (219 Managers, 2,234 PSCIs)

Small PSCI Pool (4 - 9 PSCIs)

37 Managers | 208 PSCIs

HMM Ocean Service Co Ltd, KR
4 PSCIs | Top 10%

Liquimar Tankers Mgmt Services, GR
8 PSCIs | Top 10%

Chandris Hellas Inc, GR
6 PSCIs | Top 20%

Shanghai Yuan Shipping Co Ltd, CN
4 PSCIs | Top 20%

Sea World Management & Trading, GR
7 PSCIs | Top 20%

Anglo-Eastern Shipmanagement, SG
8 PSCIs | Top 20%

Prime Tanker Management Inc, GR
5 PSCIs | Top 20%

Sea Trade Marine SA, GR
4 PSCIs | Top 20%

Knot Management AS, NO
7 PSCIs | Top 20%

Delta Ships Management Ltd, CN
4 PSCIs | Top 20%

Medium PSCI Pool (10 - 29 PSCIs)

34 Managers | 597 PSCIs

LSC SIA, LV
11 PSCIs | Top 10%

OSM Maritime Ship Management, SG
10 PSCIs | Top 10%

Great Eastern Shipping Co Ltd, IN
17 PSCIs | Top 10%

Altera Infrastructure, NO
16 PSCIs | Top 10%

D'Amico Fratelli Spa, IT
14 PSCIs | Top 20%

Unisea Shipping Ltd, GR
13 PSCIs | Top 20%

Sun Enterprises Ltd, GR
11 PSCIs | Top 20%

Avin International Ltd, GR
16 PSCIs | Top 20%

Springfield Shipping Co, GR
13 PSCIs | Top 20%

Almi Tankers SA, GR
28 PSCIs | Top 20%

Large PSCI Pool (≥30 PSCIs)

23 Managers | 1,197 PSCIs

Teekay Marine, SG
111 PSCIs | Top 20%

TMS Tankers Ltd, GR
65 PSCIs | Top 20%

Maran Tankers Management Inc, GR
51 PSCIs | Top 20%

Eastern Pacific Shipping Pte, SG
39 PSCIs | Top 20%

Anglo-Eastern Tanker Mgmt, SG
57 PSCIs | Top 20%

Columbia Shipmanagement Ltd, CY
36 PSCIs | Top 20%

Thenamaris Ships Management, GR
35 PSCIs | Top 30%

Wallem Shipmanagement Ltd, CN
35 PSCIs | Top 30%

Marine Trust Ltd, GR
44 PSCIs | Top 30%

Nereus Shipping SA, GR
54 PSCIs | Top 30%

Benchmarking Dataset Breakdown

PSCI Pool	PSCI Range	Managers	PSCIs	PSCI %
Not Benchmarked	0 - 3 PSCIs	125	232	10.4%
Small PSCI Pool	4 - 9 PSCIs	37	208	9.3%
Medium PSCI Pool	10 - 29 PSCIs	34	597	26.7%
Large PSCI Pool	≥30 PSCIs	23	1,197	53.6%
		219	2,234	100%

Notes on the Segment Benchmarking

PSCIs: Post State Control Inspections, for the specific segment and period
Top xx% corresponds to the PSC Performance Tier, see **Annex A**

SCAN FOR METHODOLOGY



VLCC (>200k DWT) (213 Managers, 2,202 PSCIs)

Small PSCI Pool (4 - 9 PSCIs)

41 Managers | 227 PSCIs

Enesel SA, GR
7 PSCIs | Top 10%

Chandris Hellas Inc, GR
9 PSCIs | Top 20%

Samos Steamship Co, GR
5 PSCIs | Top 20%

Golden Ships Management Co Ltd, HK
5 PSCIs | Top 20%

Pacific Shipmanagement, CN
4 PSCIs | Top 20%

Wallem GmbH & Co KG, DE
4 PSCIs | Top 20%

Polar Star Management Ltd, CN
5 PSCIs | Top 20%

Kyoei Tanker Co Ltd, JP
5 PSCIs | Top 20%

Anglo-Eastern Shipmgmt, SG
4 PSCIs | Top 20%

Amarine Ship Mgmt Pte, SG
4 PSCIs | Top 20%

Medium PSCI Pool (10 - 24 PSCIs)

37 Managers | 572 PSCIs

Sun Enterprises Ltd, GR
10 PSCIs | Top 10%

Zodiac Maritime Ltd, UK
14 PSCIs | Top 20%

Eastern Mediterranean Maritime, GR
14 PSCIs | Top 20%

Neda Maritime Agency Co Ltd, GR
18 PSCIs | Top 20%

Shining Gem Ltd, CN
11 PSCIs | Top 20%

Eneos Ocean Corp, JP
10 PSCIs | Top 20%

Thenamaris Ships Management, GR
22 PSCIs | Top 20%

Almi Tankers SA, GR
14 PSCIs | Top 20%

Minerva Marine Inc, GR
14 PSCIs | Top 20%

Synergy Navis Marine Pvt Ltd, IN
11 PSCIs | Top 20%

Large PSCI Pool (≥25 PSCIs)

17 Managers | 1,016 PSCIs

Bahri Ship Management DMCC, AE
70 PSCIs | Top 20%

Kyklades Maritime Corp, GR
31 PSCIs | Top 20%

Springfield Shipping Co, GR
47 PSCIs | Top 20%

Cosco Shipping Energy Trans, CN
92 PSCIs | Top 20%

Goodwood Ship Management, SG
66 PSCIs | Top 30%

International Tanker Mngmt Ltd, AE
26 PSCIs | Top 30%

Anglo-Eastern Ship Management, GR
111 PSCIs | Top 30%

Maran Tankers Management Inc, GR
115 PSCIs | Top 30%

Associated Maritime Co Ltd, CN
149 PSCIs | Top 30%

V Ships UK Ltd, UK
48 PSCIs | Top 40%

Benchmarking Dataset Breakdown

PSCI Pool	PSCI Range	Managers	PSCIs	PSCI %
Not Benchmarked	0 - 3 PSCIs	118	207	10.2%
Small PSCI Pool	4 - 9 PSCIs	41	227	11.2%
Medium PSCI Pool	10 - 24 PSCIs	37	572	28.3%
Large PSCI Pool	≥25 PSCIs	17	1,016	50.2%
		213	2,022	100%

Notes on the Segment Benchmarking

PSCIs: Post State Control Inspections, for the specific segment and period
Top xx% corresponds to the PSC Performance Tier, see **Annex A**

SCAN FOR METHODOLOGY



LNG/Gas Carriers (80 Managers, 1,896 PSCIs)

Small PSCI Pool (10 – 19 PSCIs)

16 Managers | 220 PSCIs

Alpha Gas SA, GR
12 PSCIs | Top 10%

Minerva Gas Inc, GR
14 PSCIs | Top 10%

HMM Ocean Service Co Ltd, KR
11 PSCIs | Top 20%

MMS Co Ltd, JP
11 PSCIs | Top 20%

Chevron Transport Corp Ltd, US
13 PSCIs | Top 20%

Executive Ship Management, GR
11 PSCIs | Top 20%

Hyundai LNG Shipping Co Ltd, KR
15 PSCIs | Top 20%

Hoegh Evi Fleet Mgmt AS, NO
10 PSCIs | Top 30%

H-Line Shipping Co Ltd, KR
19 PSCIs | Top 30%

Shipping Corp of India Ltd, IN
11 PSCIs | Top 30%

Medium PSCI Pool (20 – 34 PSCIs)

19 Managers | 483 PSCIs

BP Shipping Ltd, UK
20 PSCIs | Top 10%

Celsius Tech Ltd, CN
22 PSCIs | Top 20%

Wilhelmsen Ship Mgmt SDN BHD, MY
20 PSCIs | Top 20%

Capital Gas Ship Management, GR
21 PSCIs | Top 20%

Thenamaris LNG Inc, GR
32 PSCIs | Top 30%

Empresa Naviera Elcano SA, ES
22 PSCIs | Top 30%

Flex LNG Fleet Management AS, NO
30 PSCIs | Top 30%

Seapeak Maritime Singapore, SG
29 PSCIs | Top 30%

NYK LNG Shipmanagement Ltd, UK
20 PSCIs | Top 30%

SK Shipping Co Ltd, KR
31 PSCIs | Top 30%

Large PSCI Pool (≥35 PSCIs)

16 Managers | 1,081 PSCIs

BW Fleet Management AS, NO
73 PSCIs | Top GR%

Dynagas Ltd, GR
40 PSCIs | Top 20%

Gaslog LNG Services Ltd, GR
90 PSCIs | Top 20%

Cool Company Management AS, NO
51 PSCIs | Top 20%

TMS Cardiff Gas Ltd, GR
61 PSCIs | Top 20%

Maran Gas Maritime Inc, GR
140 PSCIs | Top 30%

Knutson OAS Shipping AS, NO
104 PSCIs | Top 30%

Bernhard Schulte Shipmgmt, GR
48 PSCIs | Top 30%

Northern Marine Mgmt Ltd, UK
36 PSCIs | Top 40%

KLC SM Co Ltd, KR
38 PSCIs | Top 40%

Benchmarking Dataset Breakdown

PSCI Pool	PSCI Range	Managers	PSCIs	PSCI %
Not Benchmarked	0 – 9 PSCIs	29	112	5.9%
Small PSCI Pool	10 – 19 PSCIs	16	220	11.6%
Medium PSCI Pool	20 – 34 PSCIs	19	483	25.5%
Large PSCI Pool	≥35 PSCIs	16	1,081	57.0%
		80	1,896	100%

Notes on the Segment Benchmarking

PSCIs: Post State Control Inspections, for the specific segment and period
Top xx% corresponds to the PSC Performance Tier, see **Annex A**

SCAN FOR METHODOLOGY



LPG Carriers (256 Managers, 4,608 PSCIs)

Small PSCI Pool (10 - 24 PSCIs)

57 Managers | 861 PSCIs

Northern Marine Management, US
14 PSCIs | Top 10%

Synergas SRL, IT
13 PSCIs | Top 20%

Carbofin SPA, IT
22 PSCIs | Top 20%

Roswell Tankers Corp, GR
12 PSCIs | Top 20%

Mantagas Denizcilik Ve Ticaret, TR
15 PSCIs | Top 20%

Chemgas Holding BV, NL
12 PSCIs | Top 20%

Fleet Ship Management Pte Ltd, SG
15 PSCIs | Top 20%

Apollo Ship Management Pte Ltd, SG
19 PSCIs | Top 20%

K Marine Ship Mgmt Pte Ltd, SG
10 PSCIs | Top 20%

Zodiac Maritime Ltd, UK
19 PSCIs | Top 20%

Medium PSCI Pool (25 - 49 PSCIs)

24 Managers | 849 PSCIs

Norbulk Shipping Ltd, UK
26 PSCIs | Top 10%

Western Shipping Pte Ltd, SG
42 PSCIs | Top 20%

MOL Tankship Management Pte, SG
46 PSCIs | Top 20%

Harpaingas GmbH & Co KG, DE
25 PSCIs | Top 20%

LSC SIA, LV
25 PSCIs | Top 20%

Eletson Corp, GR
40 PSCIs | Top 20%

Laeisz Reederei, DE
31 PSCIs | Top 20%

Sloman Neptun Schiffahrts, DE
46 PSCIs | Top 20%

Wah Kwong Ship Mgmt, CN
47 PSCIs | Top 20%

V Ships Asia Group Pte Ltd, SG
33 PSCIs | Top 20%

Large PSCI Pool (≥50 PSCIs)

25 Managers | 2,405 PSCIs

Dorian LPG Management Corp, GR
81 PSCIs | Top 20%

Naftomar Shipping & Trading Co, GR
77 PSCIs | Top 20%

Anglo-Eastern Shipmanagement, SG
235 PSCIs | Top 20%

Exmar Shipmanagement NV, BE
107 PSCIs | Top 20%

Latsco Marine Management Inc, GR
51 PSCIs | Top 20%

Eastern Pacific Shipping Pte, SG
76 PSCIs | Top 20%

NYK Shipmanagement Pte Ltd, SG
51 PSCIs | Top 30%

Executive Ship Management, SG
124 PSCIs | Top 30%

Bernhard Schulte, SG
58 PSCIs | Top 30%

Stealth Maritime Corp SA, GR
163 PSCIs | Top 30%

Benchmarking Dataset Breakdown

PSCI Pool	PSCI Range	Managers	PSCIs	PSCI %
Not Benchmarked	0 - 9 PSCIs	150	493	10.7%
Small PSCI Pool	10 - 24 PSCIs	57	861	18.7%
Medium PSCI Pool	25 - 49 PSCIs	24	849	18.4%
Large PSCI Pool	≥50 PSCIs	25	2,405	52.2%
		256	4,608	100%

Notes on the Segment Benchmarking

PSCIs: Post State Control Inspections, for the specific segment and period
Top xx% corresponds to the PSC Performance Tier, see **Annex A**

SCAN FOR METHODOLOGY



Feeders (<10k DWT) (169 Managers, 1,529 PSCIs)

Small PSCI Pool (6 - 10 PSCIs)

38 Managers | 291 PSCIs

Tropical Shipping, US
10 PSCIs | Top 10%

Neptune Pacific Line, NZ
9 PSCIs | Top 20%

Dandong Marine Shipping Co Ltd, CN
9 PSCIs | Top 20%

Baltnautic Shipping Ltd, LT
8 PSCIs | Top 20%

VSICO Shipping JSC, VN
8 PSCIs | Top 20%

K&K Schiffahrts Gmbh & Co KG, DE
10 PSCIs | Top 30%

AK Group Co Ltd, GR
7 PSCIs | Top 30%

Eastaway Ship Mgmt Pte, SG
6 PSCIs | Top 30%

Skyline Int'l Shipping Co Ltd, HK
6 PSCIs | Top 30%

Becker B Shipmanagement, DE
8 PSCIs | Top 30%

Medium PSCI Pool (11 - 20 PSCIs)

38 Managers | 539 PSCIs

Pacific International Lines, SG
14 PSCIs | Top 20%

Marlow Ship Mgmt Deutschland, DE
20 PSCIs | Top 20%

RCL Shipmanagement Pte Ltd, SG
13 PSCIs | Top 20%

Atlantic Shipping Co Bg Ltd, BG
11 PSCIs | Top 20%

Columbia Shipmanagement Ltd, CY
13 PSCIs | Top 20%

Fonway Shipping Pte Ltd, SG
20 PSCIs | Top 20%

Hana Shipping Co Ltd, KR
19 PSCIs | Top 20%

Synergy Marine Pte Ltd, SG
12 PSCIs | Top 20%

Jebsen Shipping Partners Mgmt, DE
11 PSCIs | Top 20%

HS Bereederungs Gmbh & Co, DE
20 PSCIs | Top 30%

Large PSCI Pool (≥21 PSCIs)

16 Managers | 483 PSCIs

Holwerda Shipmanagement BV, NL
22 PSCIs | Top 20%

Hyde Shipping Corp, US
26 PSCIs | Top 20%

JR Ship Management BV, NL
35 PSCIs | Top 20%

Kotoku Kaiun Co Ltd, JP
31 PSCIs | Top 30%

Okyanus Ege Denizcilik Ticaret, TR
30 PSCIs | Top 30%

Columbia Shipmanagement, SG
32 PSCIs | Top 40%

Jipeng Fuzhou Ship Management, CN
40 PSCIs | Top 40%

Baltnautic Shipmanagement Ltd, LT
22 PSCIs | Top 40%

Peter Doehle Schiffahrts-KG, DE
27 PSCIs | Top 40%

BF Shipmgmt Gmbh & Co KG, DE
31 PSCIs | Top 40%

Benchmarking Dataset Breakdown

PSCI Pool	PSCI Range	Managers	PSCIs	PSCI %
Not Benchmarked	0 - 5 PSCIs	77	216	14.1%
Small PSCI Pool	6 - 10 PSCIs	38	291	19.0%
Medium PSCI Pool	11 - 20 PSCIs	38	539	35.3%
Large PSCI Pool	≥21 PSCIs	16	483	31.6%
		169	1,529	100%

Notes on the Segment Benchmarking

PSCIs: Post State Control Inspections, for the specific segment and period
Top xx% corresponds to the PSC Performance Tier, see **Annex A**

SCAN FOR METHODOLOGY



Large Containers (10-90k DWT) (478 Managers, 23,236 PSCIs)

Small PSCI Pool (10 - 34 PSCIs)

144 Managers | 2,694 PSCIs

Polish Ocean Lines, PL
10 PSCIs | Top 10%

Shineline SDN BHD, MY
12 PSCIs | Top 10%

Tropical Shipping, US
25 PSCIs | Top 10%

Okee Shipmanagement Gmbh & Co, DE
25 PSCIs | Top 20%

Shoei Ship Management Pte Ltd, SG
10 PSCIs | Top 20%

Log-In Logistica Intermodal SA, BR
12 PSCIs | Top 20%

Synergy Oceanic Services India, IN
25 PSCIs | Top 20%

Apex Ship Management Pte Ltd, SG
10 PSCIs | Top 20%

Dandong Marine Shipping, CN
16 PSCIs | Top 20%

Besiktas Tersane SA, CY
11 PSCIs | Top 20%

Medium PSCI Pool (35 - 99 PSCIs)

79 Managers | 4,604 PSCIs

Atlanship SA, CH
36 PSCIs | Top 20%

Reefership Marine Services LLC, CR
57 PSCIs | Top 20%

Quanzhou Ansheng Shpg Co Ltd, CN
40 PSCIs | Top 20%

Sinotrans Container Lines Co, CN
61 PSCIs | Top 20%

SMTECH Ship Mgmt Co Ltd, KR
50 PSCIs | Top 20%

Ningbo Ocean Shipping Co Ltd, CN
46 PSCIs | Top 20%

RHL Reederei Hamburger Lloyd, DE
51 PSCIs | Top 20%

Norbulk Shipping Ltd, UK
54 PSCIs | Top 20%

Eastern Mediterranean Maritime, GR
73 PSCIs | Top 20%

Shanghai Yingkai Shipping Co, CN
78 PSCIs | Top 20%

Large PSCI Pool (≥100 PSCIs)

55 Managers | 15,085 PSCIs

Marlow Navigation Co Ltd, CY
128 PSCIs | Top 20%

Arkas Denizcilik Ve Nakliyat, TR
278 PSCIs | Top 20%

Swire Shipping Pte Ltd, SG
100 PSCIs | Top 20%

Wan Hai Lines Pte, SG
237 PSCIs | Top 20%

Wan Hai Lines Ltd, TW
107 PSCIs | Top 20%

Anglo-Eastern Gmbh, DE
154 PSCIs | Top 20%

Bernhard Schulte LP, CN
109 PSCIs | Top 30%

Bernhard Schulte, DE
139 PSCIs | Top 30%

Shanghai Ocean Shipping, CN
339 PSCIs | Top 30%

KLC SM Co Ltd, KR
105 PSCIs | Top 30%

Benchmarking Dataset Breakdown

PSCI Pool	PSCI Range	Managers	PSCIs	PSCI %
Not Benchmarked	0 - 9 PSCIs	200	880	3.8%
Small PSCI Pool	10 - 34 PSCIs	144	2,694	11.6%
Medium PSCI Pool	35 - 99 PSCIs	79	4,604	19.8%
Large PSCI Pool	≥100 PSCIs	55	15,085	64.8%
		478	23,263	100%

Notes on the Segment Benchmarking

PSCIs: Post State Control Inspections, for the specific segment and period
Top xx% corresponds to the PSC Performance Tier, see **Annex A**

SCAN FOR METHODOLOGY



Ultra Large Containers (>90k DWT) (74 Managers, 8,734 PSCIs)

Small PSCI Pool (10 - 34 PSCIs)

18 Managers | 398 PSCIs

Yang Ming Marine Transport, TW
20 PSCIs | Top 10%

Bernhard Schulte, IN
15 PSCIs | Top 20%

HL Crewmanagement Gmbh, DE
27 PSCIs | Top 20%

United Arab Shipping Co Ltd, AE
23 PSCIs | Top 20%

Peter Doehle Schiffahrts-KG, DE
18 PSCIs | Top 20%

APL Maritime Ltd, US
11 PSCIs | Top 30%

ASM Maritime BV, NL
21 PSCIs | Top 30%

G-Marine Service Co Ltd, KR
20 PSCIs | Top 30%

Marlow Ship Mgmt, DE
33 PSCIs | Top 30%

Enesel Dry SA, GR
33 PSCIs | Top 30%

Medium PSCI Pool (35 - 99 PSCIs)

16 Managers | 934 PSCIs

K Line Ship Management Pte Ltd, SG
91 PSCIs | Top 20%

Wilhelmsen Ahrenkiel Bulk Gmbh, DE
51 PSCIs | Top 20%

NYK Shipmanagement Pte Ltd, SG
73 PSCIs | Top 30%

RHL Reederei Hamburger Lloyd, DE
49 PSCIs | Top 30%

MOL Ship Management, SG
51 PSCIs | Top 30%

MMS Bulkship Management, SG
53 PSCIs | Top 30%

Columbia Shipmanagement Ltd, CY
35 PSCIs | Top 30%

Columbia Shipmanagement, SG
40 PSCIs | Top 30%

V Ships Hamburg Gmbh & Co, DE
43 PSCIs | Top 30%

V Ships Greece Ltd, GR
81 PSCIs | Top 40%

Large PSCI Pool (≥100 PSCIs)

21 Managers | 7,307 PSCIs

Fleet Ship Management Pte Ltd, SG
152 PSCIs | Top 30%

Shanghai Ocean Shipping Co Ltd, CN
452 PSCIs | Top 30%

Zodiac Maritime Ltd, UK
102 PSCIs | Top 30%

Orient Overseas Container Line, CN
221 PSCIs | Top 30%

CPO Containerschiffreederei, DE
192 PSCIs | Top 30%

Seaspan Ship Management Ltd, CA
536 PSCIs | Top 30%

CMA Ships SAS, FR
509 PSCIs | Top 40%

Hapag-Lloyd AG, DE
189 PSCIs | Top 40%

Anglo-Eastern Germany Gmbh, DE
116 PSCIs | Top 40%

Anglo-Eastern Ship Mgmt, CN
109 PSCIs | Top 40%

Benchmarking Dataset Breakdown

PSCI Pool	PSCI Range	Managers	PSCIs	PSCI %
Not Benchmarked	0 - 9 PSCIs	19	95	1.1%
Small PSCI Pool	10 - 34 PSCIs	18	398	4.6%
Medium PSCI Pool	35 - 99 PSCIs	16	934	10.7%
Large PSCI Pool	≥100 PSCIs	21	7,307	83.7%
		74	8,734	100%

Notes on the Segment Benchmarking

PSCIs: Post State Control Inspections, for the specific segment and period
Top xx% corresponds to the PSC Performance Tier, see **Annex A**

SCAN FOR METHODOLOGY



1. Objectives of a PSC Benchmarking Methodology

To develop a fair Benchmarking system, you need to make sure you compare apples to apples and oranges with oranges, and when it comes to shipping with respect to PSC, this means comparing ships of the:

- Same Type (e.g. Bulkers with Bulkers)
- Same Fleet Segment (DWT Wise)
- Same Year of Built (YoB), same age group
- Same PSC performance on Same Port

We have applied these principles consistently, throughout the RISK4SEA platform, to make sure everyone is treated fairly.

2. Identify PSC Data used for Benchmarking

RISK4SEA is using a team of analysts and third-party vendors and experts to collect, evaluate and validate data used in the platform. As a raw input the model uses PSC Data (Inspections and Detentions along with the accompanying details of each inspection) that are assigned to Port, Country, Manager, Class, Flag at the time of the Inspection, for each PSC inspection. Here the following PSC data parameters have been accounted for **Ocean going Performance, all ports, Countries, MoUs**, etc.

3. Set the Ship Types to be used for Benchmarking & Split Global Fleet into Segments

Benchmarking cannot proceed unless we split the global fleet into segments, and RISK4SEA platform uses the following parameters:

1. Bulker – Handysize (<35k DWT)
2. Bulker – Handymax (35-50k DWT)
3. Bulker – Supramax (50-67k DWT)
4. Bulker – Panamax (67-100k DWT)
5. Bulker – Cape (>100k DWT)
6. **Bundle: All dry bulk (Segments 1, 2, 3, 4,5)**
7. General Cargo

8. Tanker – Small Product (<25k DWT)
9. Tanker – MR1/MR2 (25 – 60k DWT)
10. Tanker – LR1/LR2 (60-125k DWT)
11. Tanker – Suezmax (125-200k DWT)
12. Tanker – VLCC (>200k DWT)
13. **Bundle: All tankers (Segments 8,9,10,11,12)**
14. LNG/Gas Carriers
15. LPG Carrier
16. Container – Feeders (<10k DWT)
17. Container – Large (10-90k DWT)
18. Container – Ultra Large (>90k DWT)
19. **Bundle: All containers (Segments 16, 17, 18)**
20. Vehicle Carrier
21. Ro Pax
22. Offshore
23. Other Ship Type
24. **Bundle: All ships (All above segments)**

4. Set the Age groups to be used for Benchmarking

In depth analysis has indicated that all and any KPIs that may be used for PSC performance Benchmarking are sensitive to age, therefore to set the comparison straight one crucial step is to set either the exact age and/or age groups to avoid comparing new ships with old ships and so on. The platform may use both approaches using the following five (5) age groups:

- 0-5 Years of age
- 6 to 10 Years of age
- 11-15 Years of age
- 16-20 Years of age
- Older than 20 Years of age

SCAN FOR METHODOLOGY



5. Set the Time Intervals for Benchmarking

A limited number of data and therefore PSCIs makes any comparison irrelevant due to insufficient data pools and therefore the following data have been accounted for in this benchmark:

- **Last 36 Calendar Months at the date of issue**, as identified at the bottom of the report

6. Set the KPIs to be used for Benchmarking

Arriving to the final stage before the final calculation for the performance analytics the most critical is to define the Key Performance Indicators (KPI) that the model will be using. Here the following KPIs are being used:

DPI: Deficiency per Inspection (Value, Number)

Definition: Average number of deficiencies per inspection

Performance: The smaller figure indicates better PSC performance

DER: Detention Rate (%)

Definition: Percentage of detentions per 100 inspections

Performance: The smaller figure indicates better performance

7. Benchmarking Performance Calculation

To benchmark against a value, you need to clearly identify the methodology and the benchmarks on how the values have been set and processed, with the following approach applied here:

7.1 KPI Benchmarking Performance Calculation: Making sure what we count makes sense

Benchmarking is about accounting for deviations from the assigned benchmark on two (2) parameters mainly

- The Deficiency per Inspection (DPI), i.e. Number of Deficiencies / Number of Inspections for a given period

- The Detention Rate (DER), i.e. Number of Detentions / Number of Inspections x 100 for a given period

Each entity is benchmarked for each respective KPI against a set Benchmarked as follows:

- Each **ship** is benchmarked against the average of other ships of similar type and age group at the same port
- Each **manager** is benchmarked against the average of other managers on the basis of the fleet they manage for the period under review

For every Ship there is a benchmark that is provided by the AVERAGE performance of the same ship YoB, Fleet Segment and Port that is calculated for a given period, as per the worked example provided below. For every Manager there is a benchmark that is provided by the SUM of the fleets of the same Group that they operate as calculated for a given period, as per the worked example provided below.

The Deviation is the % of the deviation of actual performance vs the Benchmark (which is the average) x 100

KPI (Benchmarking Performance) (%) =

$$[\text{KPI (value)} - \text{KPI (benchmark)}] / [\text{KPI (benchmark)}]$$

In case KPI Benchmarks are set the same may be calculated for set of Ships, e.g. fleet and managers, on the following basis:

KPI (Benchmark Value) =

Average [KPI(of type A1 & age group A1), KPI (of type B2 & age group B2), KPI(of type C3 & age group C3)

SCAN FOR METHODOLOGY



At any given time to set an Overall Benchmarking Performance (BP) score anyone may do so by simply averaging all the factors used as each KPI is benchmarked against a set corresponding benchmark.

7.2 Worked Example on Ship Benchmarking Performance Calculation

For demonstration purposes the of Ship#1 is used, on the Cape Fleet Segment, with YoB: 2012, corresponding to the 10-14 age group. This is the actual performance of the ship for the period under investigation:

PSCI #	PSC Ship Inspection Portfolio				Port Specific Values		
	Port	MoU	#DEFs	#DET	DPI-B	DER-B	PSCIs
1	Port A	Paris	3	0	4,12	6,23%	95
2	Port B	Paris	2	0	3,93	4,14%	78
3	Port C	Tokyo	4	0	5,23	3,12%	48
4	Port D	USCG	7	1	8,76	8,45%	39
5	Port E	USCG	3	0	2,16	2,15%	124
6	Port F	Med	1	0	1,16	6,12%	62
Average			3.33	16.67%	3.66	4.57%	446
Benchmarking Performance					-8.8%	264.4%	127.8%

Where

#DEFs: Number of deficiencies

#DET: Number of Detentions (either 0 or 1 on each port)

DPI: Deficiency Per Inspection KPI

DER: Detention Rate KPI, per 100 inspections (%)

Port Benchmarks are for same Port, Fleet Segment (cape) & Age (YOB=2012)

DPI-B: Deficiency Per Inspection (DPI) - Benchmark (same port, fleet segment, age group, L36M at the date of PSCI)

DER-B: Detention Rate (DER) - Benchmark (same port, fleet segment, age group, L36M at the date of PSCI)

SCORE: Ship/Manager Combined Risk Evaluation as average of DPI-PER & DER-PER giving an overall assessment (Best=-100%, >0 is above Benchmark Average)

Benchmarking Performance: The deviation from the Actual Performance from the Benchmark

Ship/Fleet Benchmarking Performance: The average of both DPI and DER Benchmarking Performance

Calculation for the above example:

DPI-B: $(3.33 - 3.66)/3.66 \times 100\% = -8.8\%$

DER-B: $(16.67 - 4.57)/4.57 \times 100\% = +264.4\%$

Overall Benchmark Performance for the **Period** as the average Benchmark of DPI/DER: $SCORE = (-8.8 + 264.4) / 2 = +127.8\%$

7.3 Worked Example on Manager/Fleet Benchmarking Performance Calculation

For demonstration purposes a fleet of 6 ships is calculated, including the Ship#1 of the above calculation, with each ship gone through the process of Ship Benchmarking Performance Calculation (as per above), Therefore this is the actual performance of the fleet for the period under investigation:

Ship #	PSC FLEET Inspection Portfolio				Ship Benchmarks on PSCIs			Ship SCORE
	Ship	Segment	DPI	DER	DPI	DER	PSCIs	
1	Ship #1	Cape	3.33	16.67%	3.66	4.57%	446	127.8%
2	Ship #2	Cape	1.14	0.00%	2.50	3.30%	385	-77.2%
3	Ship #3	Cape	1.60	0.00%	2.50	3.30%	195	-68.0%
4	Ship #4	Cape	1.00	0.00%	2.50	3.30%	658	-80.0%
5	Ship #5	Cape	1.20	0.00%	2.50	3.30%	1,562	-76.0%
6	Ship #6	Cape	4.00	12.00%	5.00	7.00%	895	25.7%
Average			2.05	4.78%	3.17	4.23%	4,141	-11.3%

The Abbreviations and the notes used in the Ship Worked example apply here as well.

On the above example the benchmarking performance of the fleet is -11.3%

SCAN FOR METHODOLOGY



7.4 Performance Tiers

To make sure that all reports contain the same level of reliability a scale has been used across the full spectrum of the RISK4SEA platform to convert the actual benchmarking Performance of the ships and Managers to the actual Performance Tier. For the purposes of this report the following scale has been applied:

Performance Tier	Benchmarking Performance	
	Min	Max
Top 10%	-100%	-95%
Top 20%	-95%	-70%
Top 30%	-70%	-40%
Top 40%	-40%	-10%
Average 50%	-10%	10%
Bottom 40%	10%	40%
Bottom 30%	40%	70%
Bottom 20%	70%	100%
Bottom 10%	100%	10,000%

8. Clarifications

8.1 Managers Benchmarked and Minimum PSCI Limit to be included in the Benchmarking Pools

Research has indicated that normally when we plot a manager/PSCI plot the median number of PSCIs per manager (i.e. the Number of PSCIs corresponding to approximately the half of the managers) should be the limit to exclude those who do NOT meet this criterion. Normally this pool of PSCIs is in the range of 10-20% of the total Segment PSCIs for the period under review.

This is why we provide the full benchmarking Dataset Breakdown on each of the Top Performers Segment:

Benchmarking Dataset Breakdown				
PSCI Pool	PSCI Range	Managers	PSCIs	PSCI %
Not Benchmarked	0 - 9 PSCIs	1,034	4,625	11.6%
Small PSCI Pool	10 - 24 PSCIs	586	9,041	22.6%
Medium PSCI Pool	25 - 49 PSCIs	299	10,395	26.0%
Large PSCI Pool	≥50 PSCIs	157	15,920	39.8%
		2,076	39,981	100%

8.2 Missing PSCIs

The case of a missing PSCIs may be a case (especially zero deficiency PSCIs from west Africa ports not officially reported to the port or the national Authority or International to any MoU or other party which it does NOT affect the actual results presented here in this report for the following reasons

1. These Reports (if any) have NOT been reported to anywhere else than the ship and therefore cannot be verified or inserted into the platform unless provided by the Manager of the ship.
2. We have reasons to believe that the phenomenon may be more or less of the same limited extend and that may be applicable to other managers as well.
3. Given the methodology uses the addition of an additional PSCI (with the exception of a Detention) will NOT alter the benchmarking performance of a fleet that, has to do with the sum of PSCIs from many ships, as per the examples presented above.
4. The basis of the benchmarking is to have and apply a set of rules and criteria to be used equally across the full spectrum of the data under review and this is wat we have done in this report.

FURTHER INFO

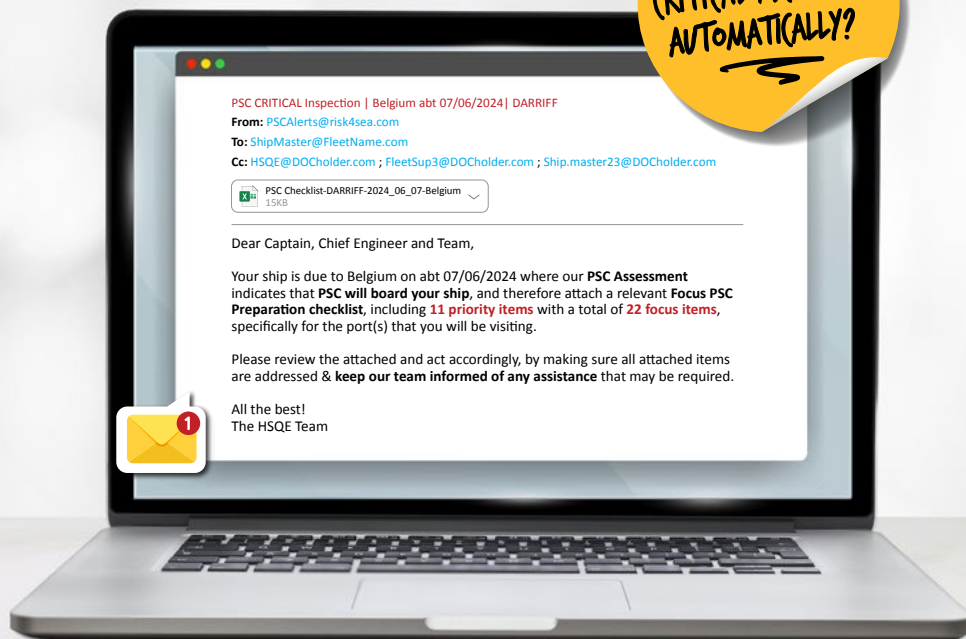
Should you be interested to learn more please visit www.risk4sea.com

SCAN FOR METHODOLOGY



RISK4SEA

CAN YOU IDENTIFY
CRITICAL PSC CALLS?
AUTOMATICALLY?



Automation License will



95% PSC Inspection
Guess Rate



20-35
Checklist
Focus Items



80-95% 

Port Findings Coverage

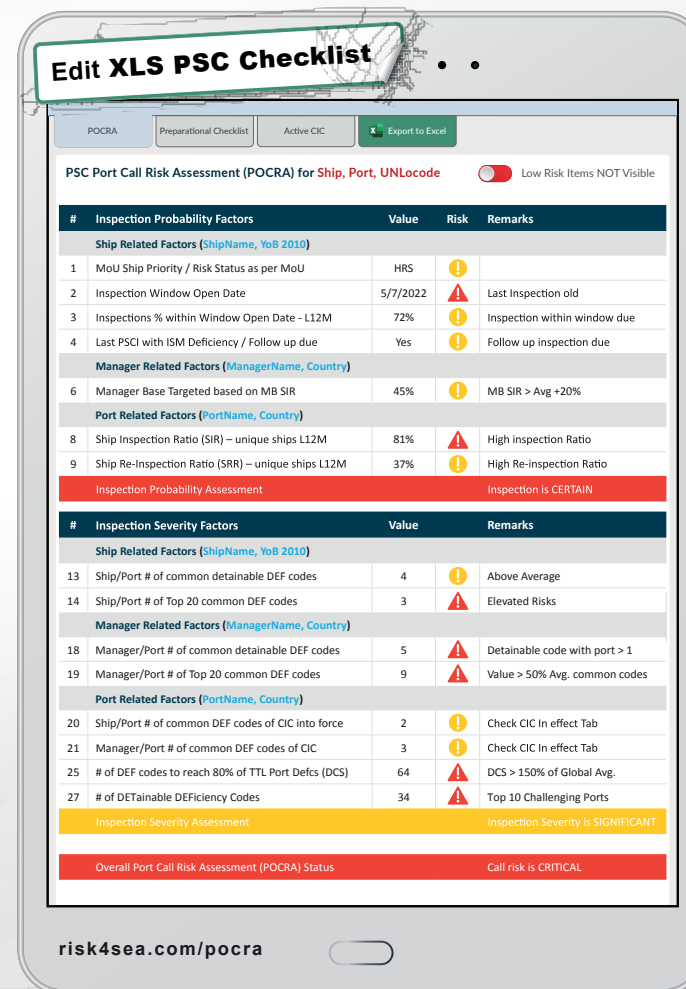
10x Minimize OPEX



www.risk4sea.com/automation

Illuminating PSC Performance

Introducing **1-click Ship, Manager & Port Specific POCRA**



risk4sea.com/pocra

www.risk4sea.com/pocra

Client List ▼

RISK4SEA is a SaaS PSC Intelligence platform, illuminating PSC performance to Prepare/Assess PSC inspections, Benchmark against competition and Automate PSC functions and alerts to eliminate detentions and minimize OPEX. Explore more at www.risk4sea.com

